

20  
BETON  
30



## Weiterbauen am Bestand

19. Mai 2022

Elisabeth Boesch, Architektin BSA





# WEITERBAUEN AM BESTAND





Verwaltungsgebäude Eternit Niederurnen, HMS Instandsetzung 1997 - 2005



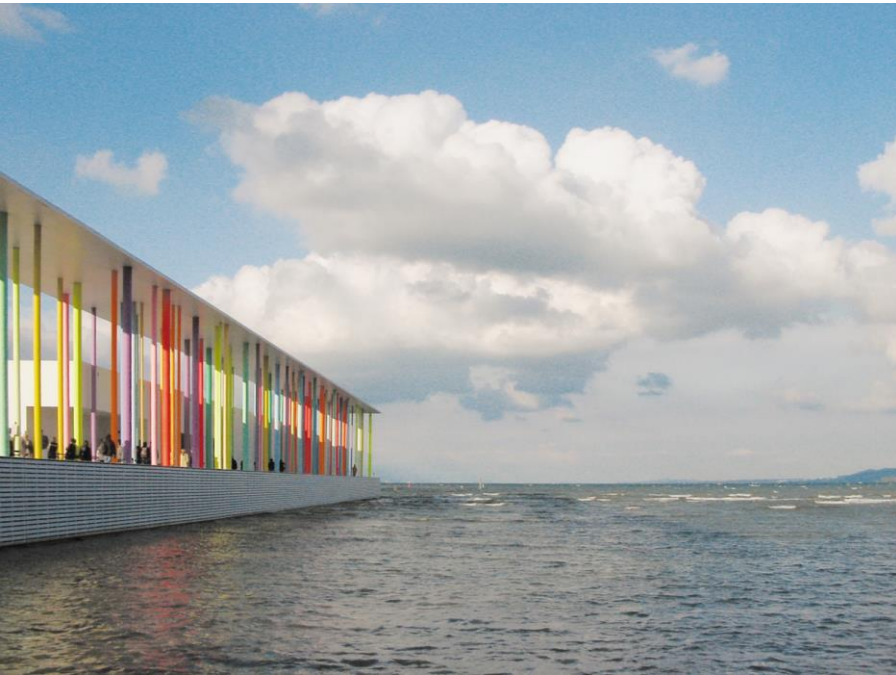
Umbau und Erweiterung einer Villa aus 1876 für die Universität Zürich



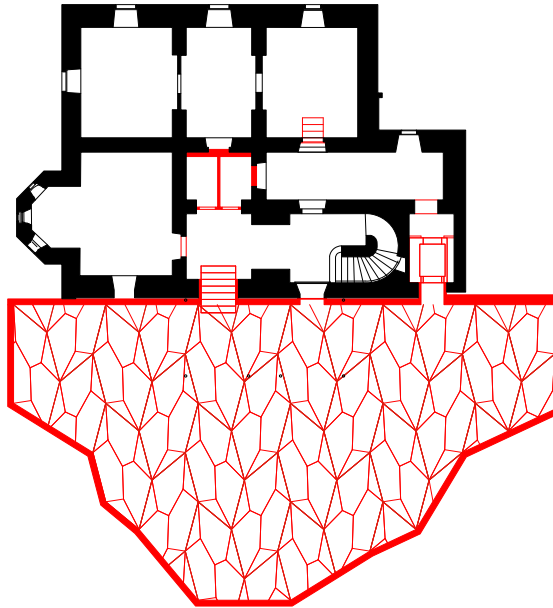
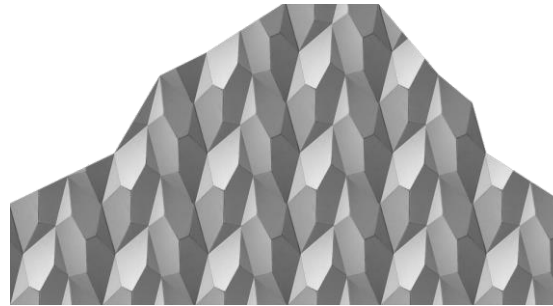
Testplanung und Masterplan Industriereal Sulzer Lagerplatz Winterthur 2007

# VON FALL ZU FALL





Pavillon Ouil Für die Landesausstellung expo.02 in Yverdon-les-Bains



Bibliothek für das Orientalisches Seminar der Universität Zürich



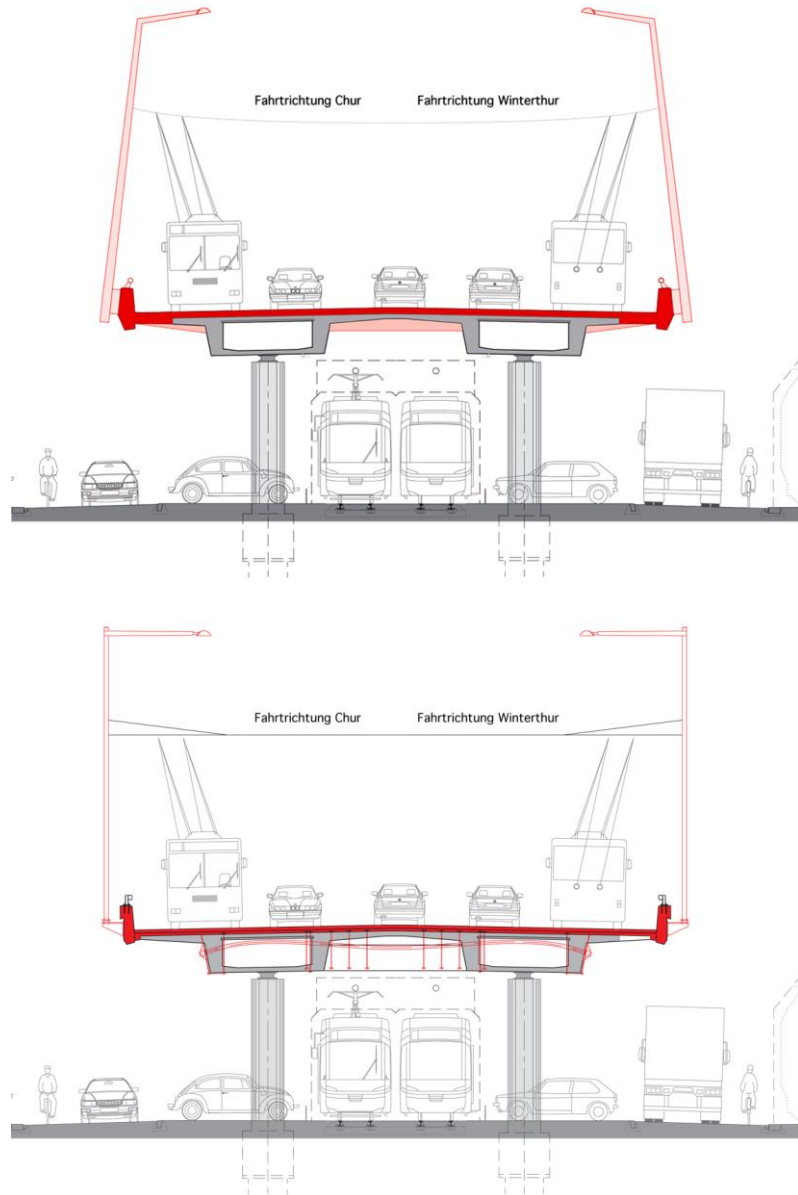
Treppenaufgang auf die Hardbrücke (Hochstrasse mit Busspur) Zürich

# BETTER TOGETHER

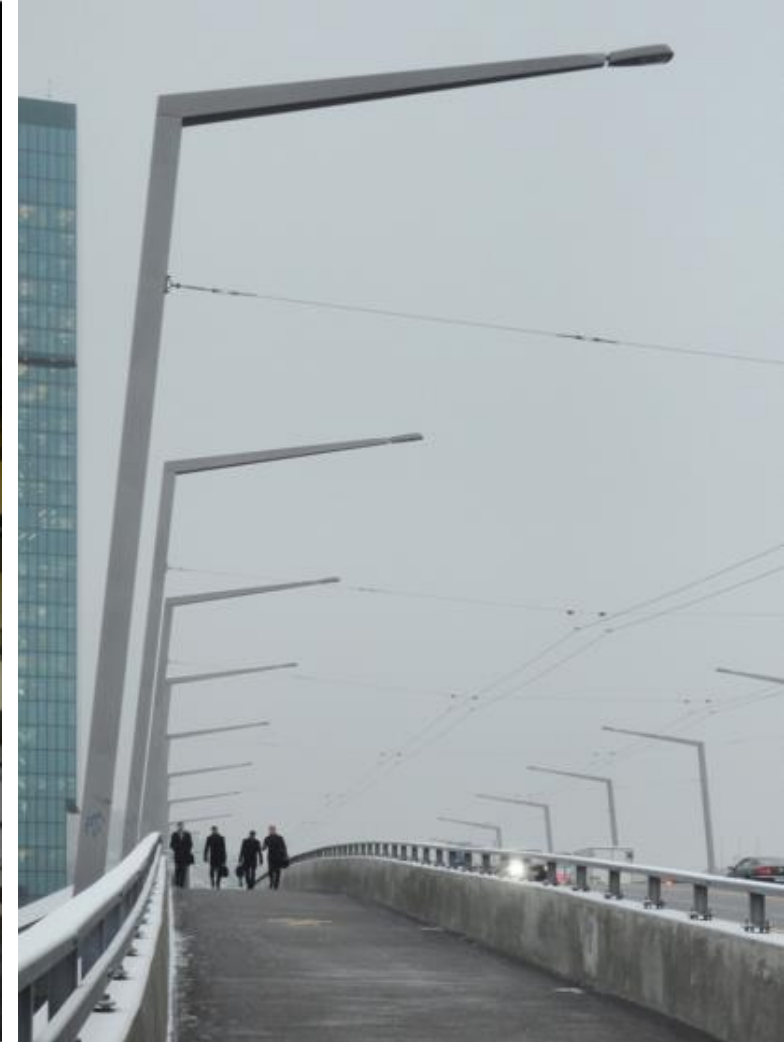
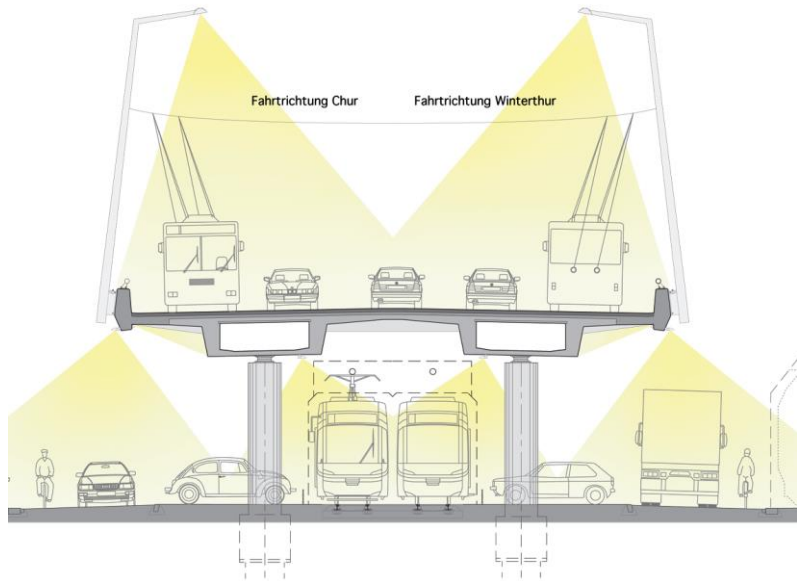




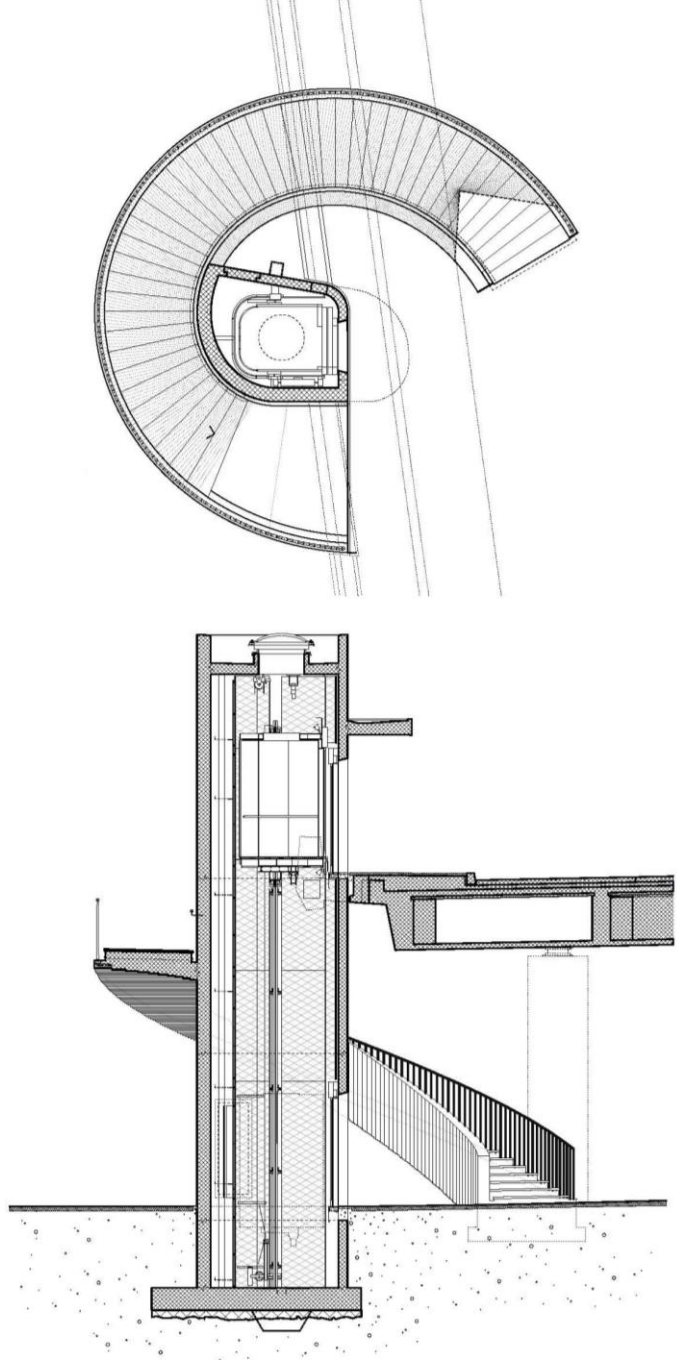




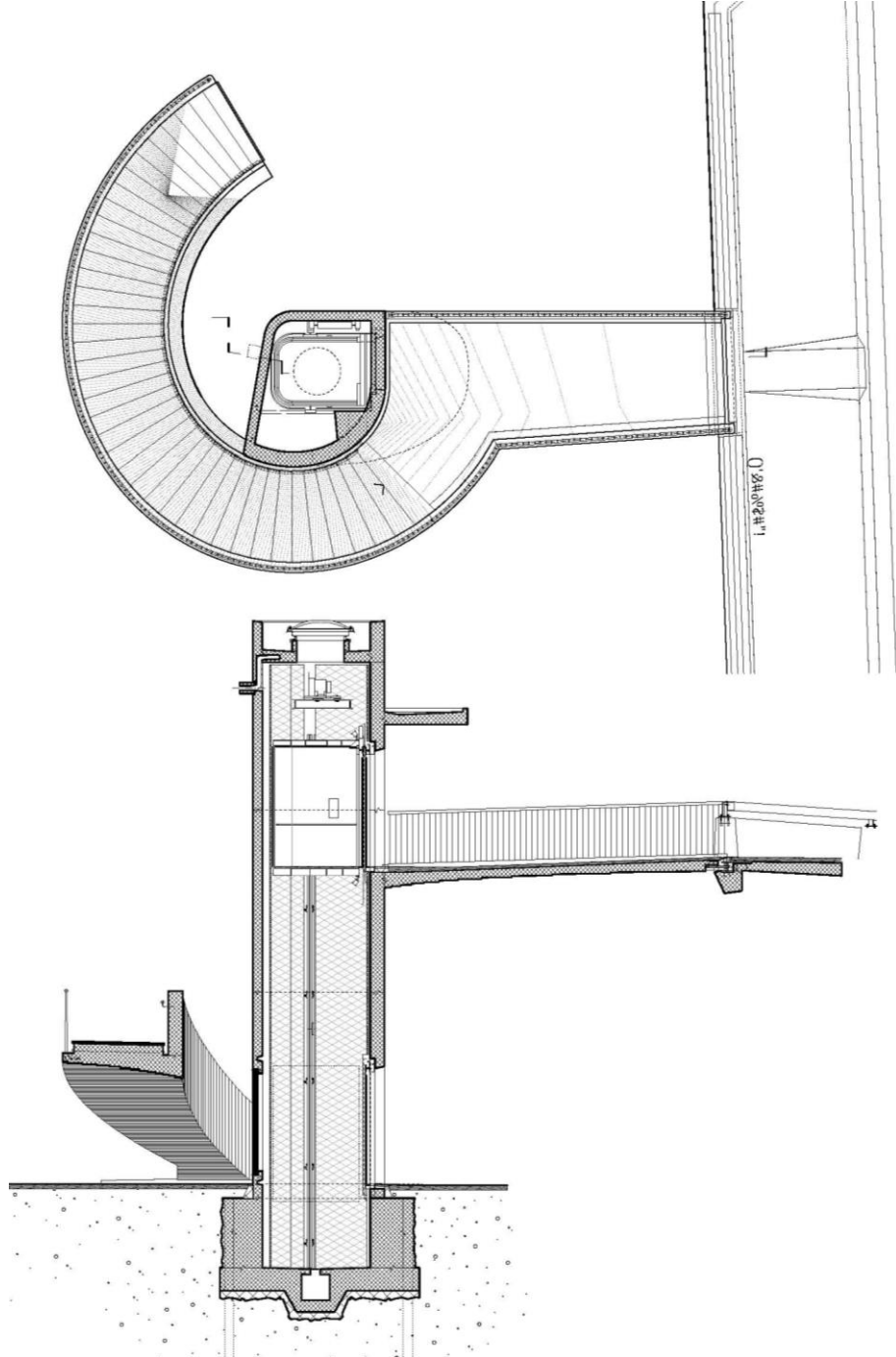




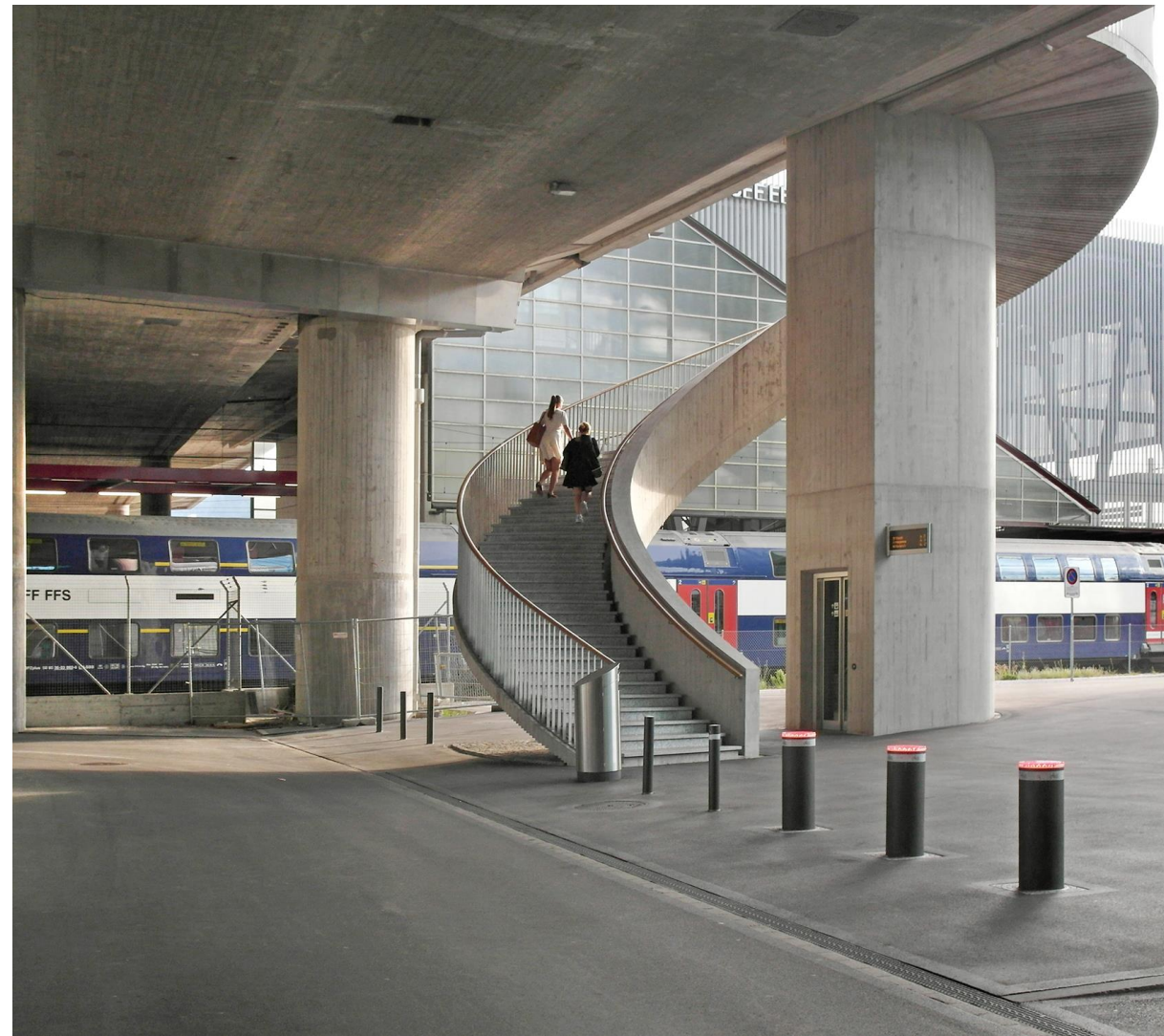
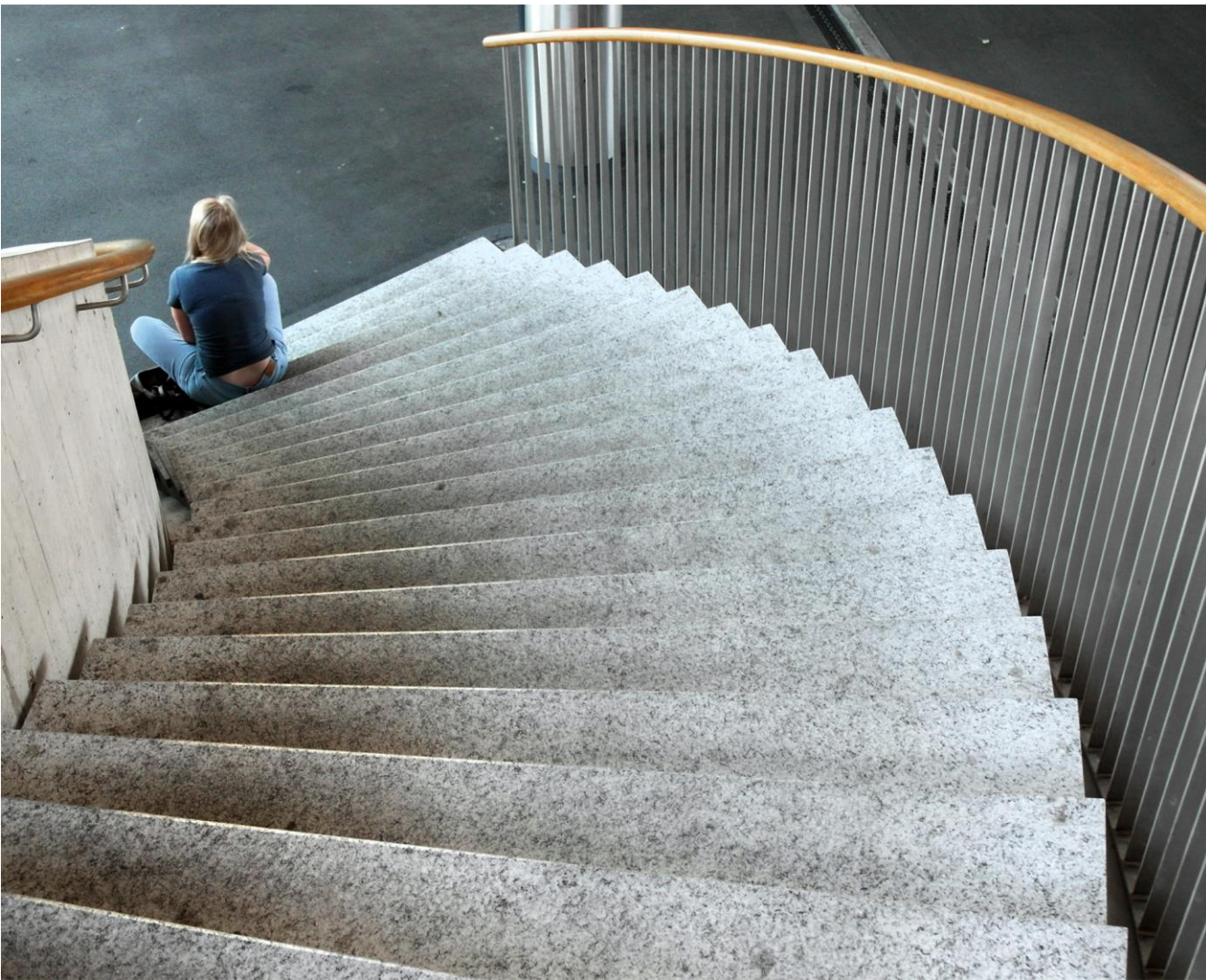




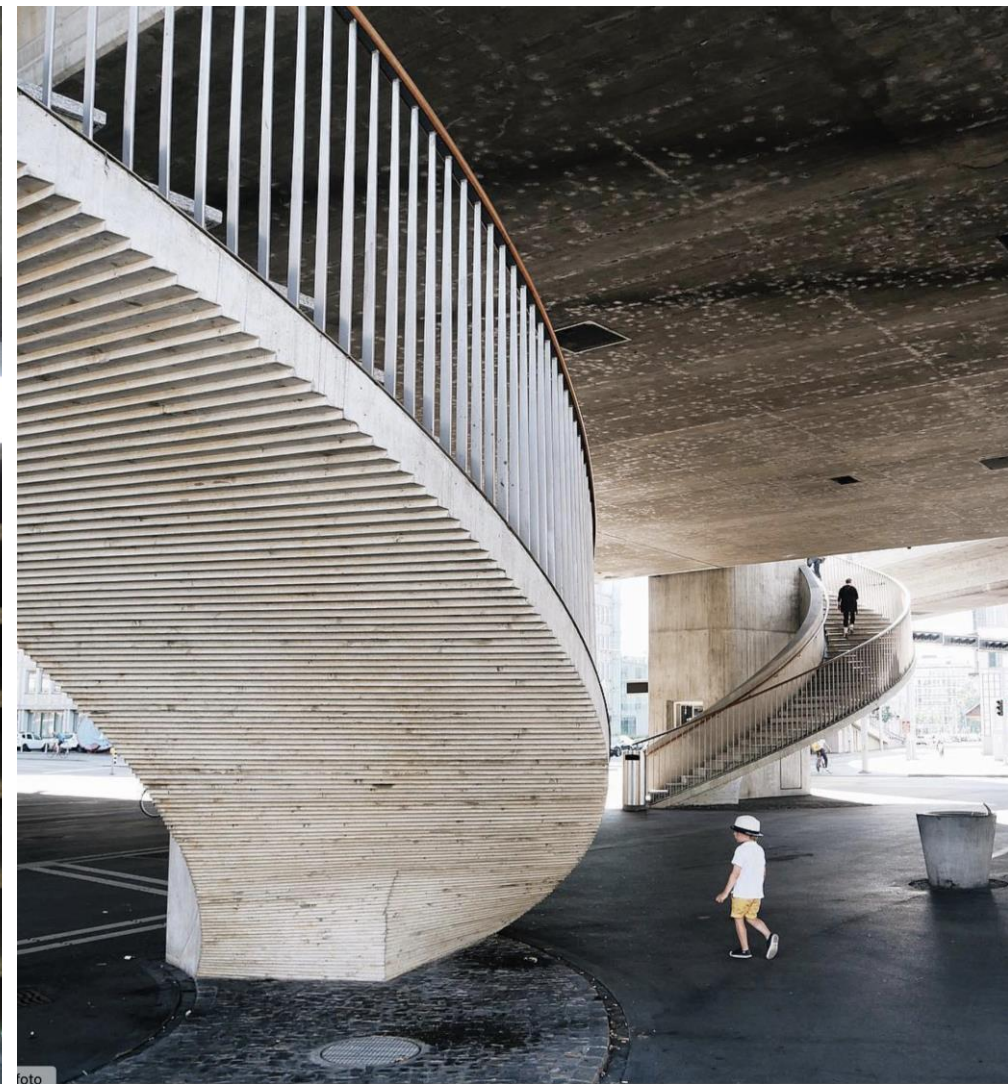
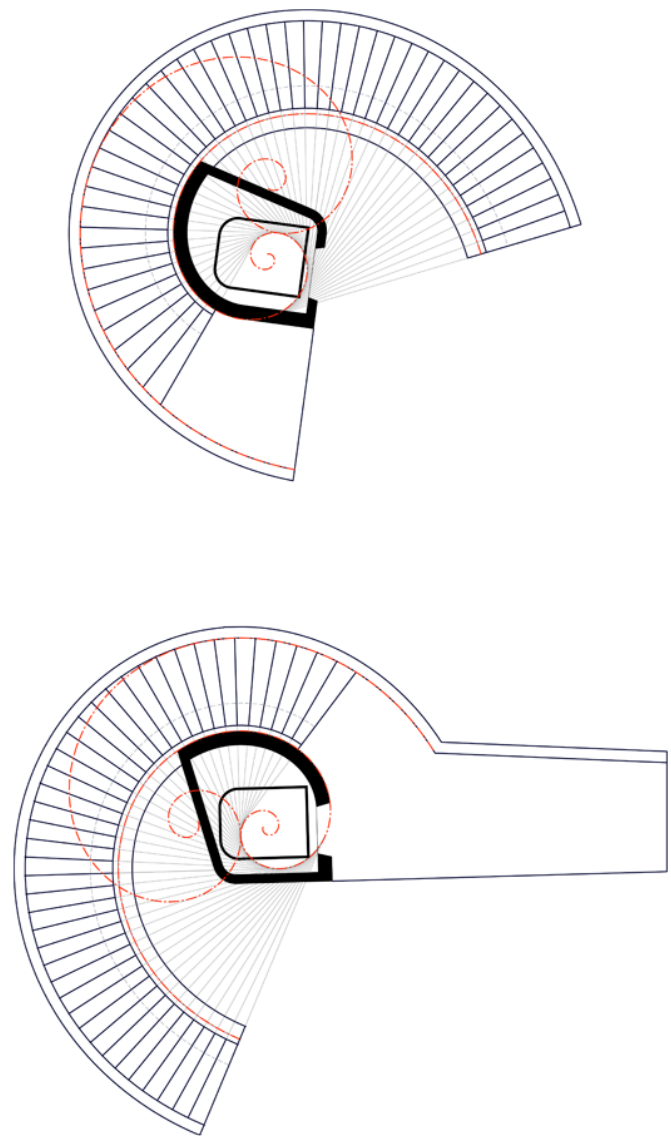








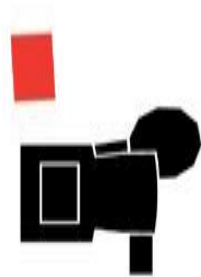




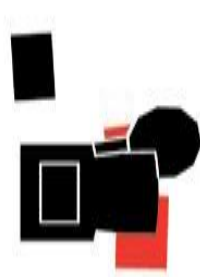




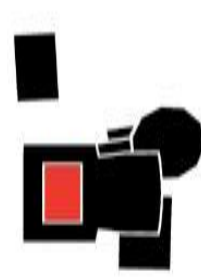
1952



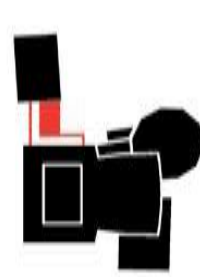
1955



1964



1994



1997



2007



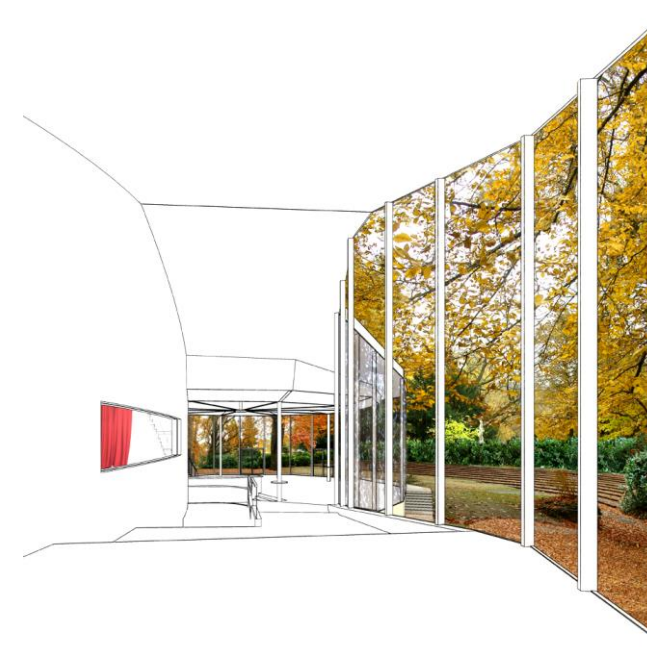
2020



1952

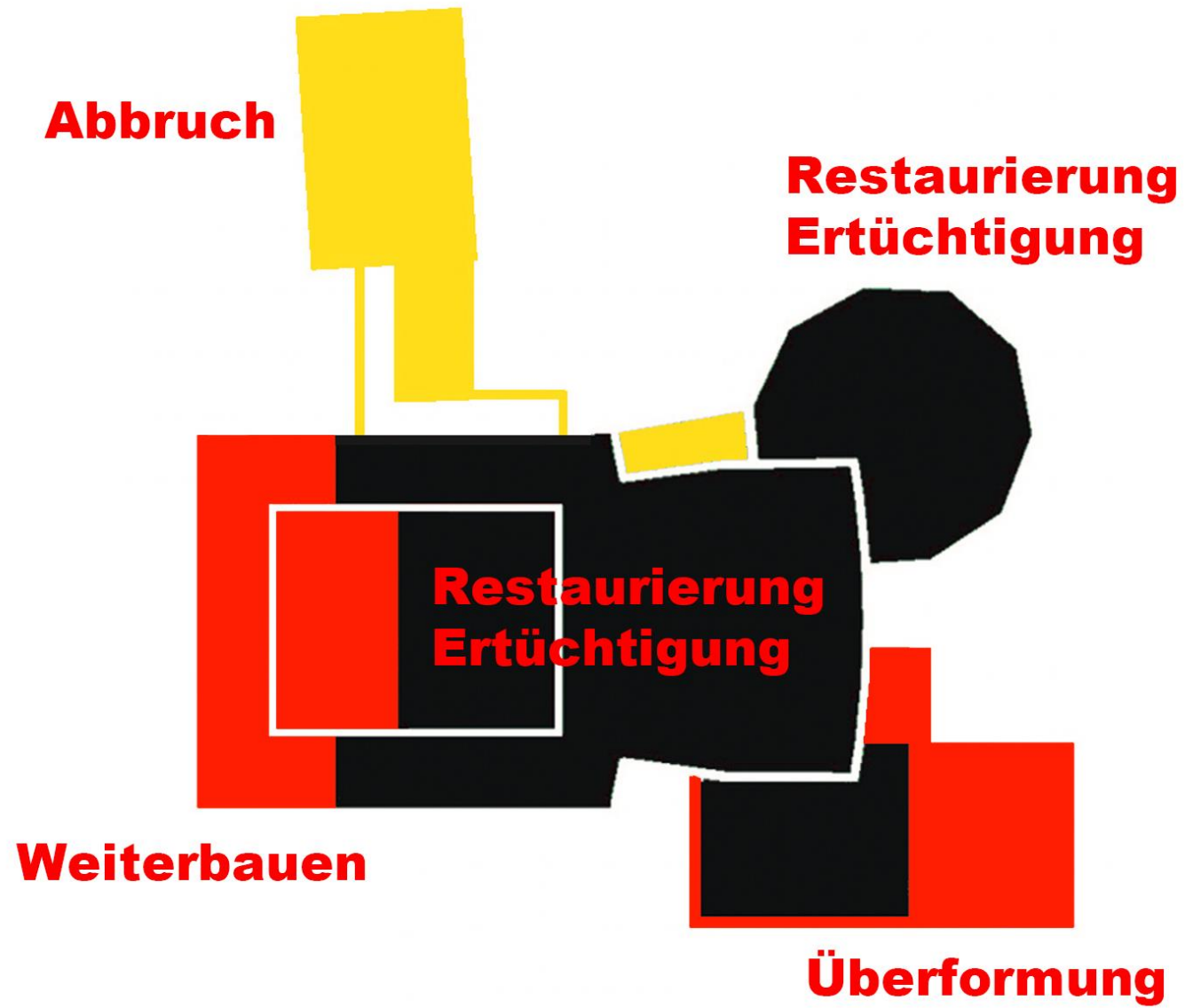


1955 / 1964 / 1994

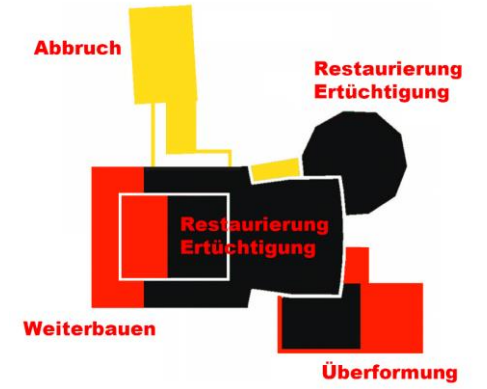
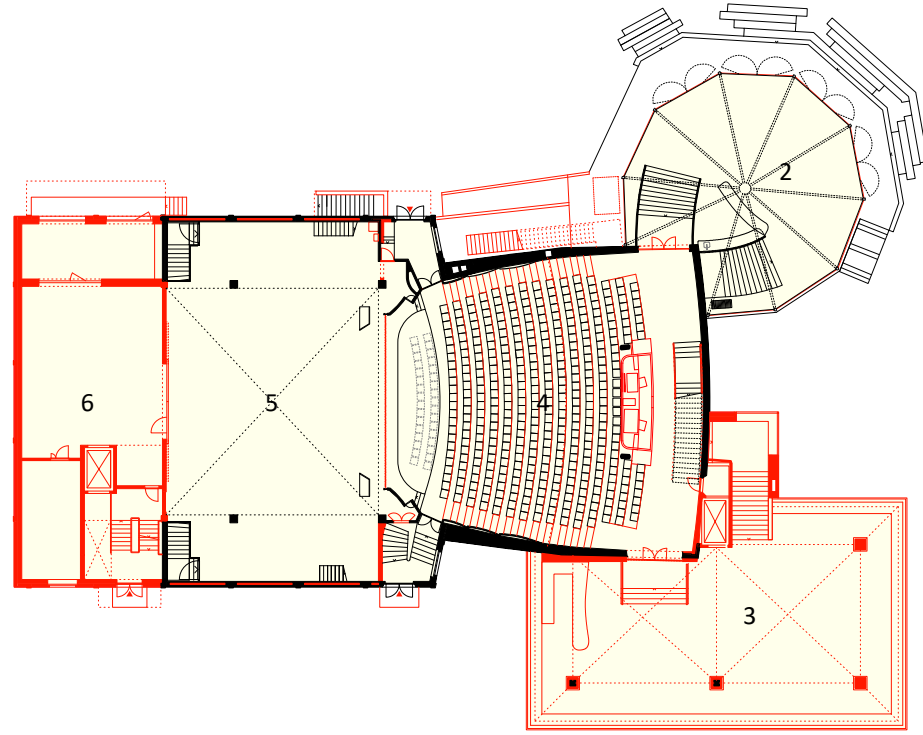


2007

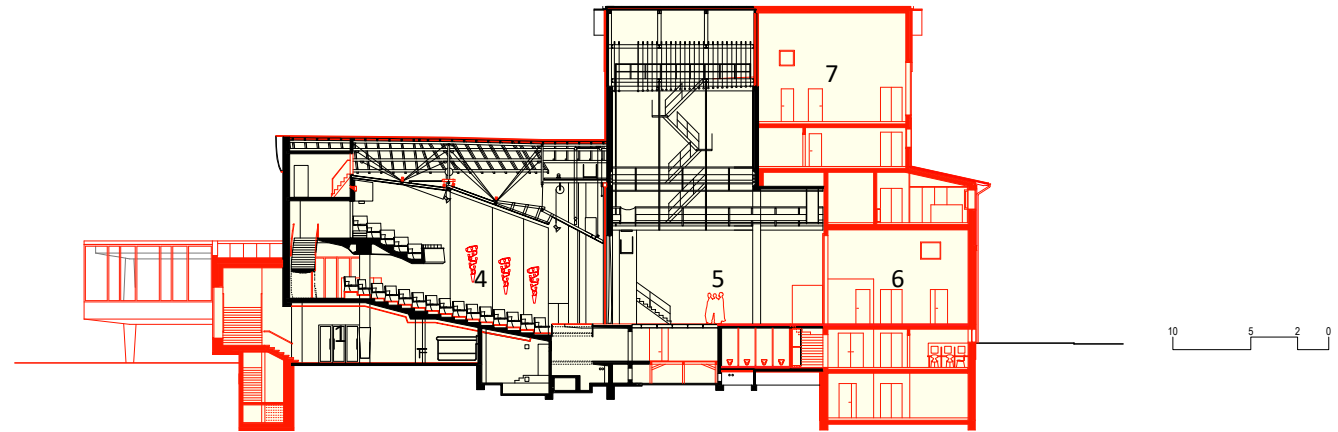








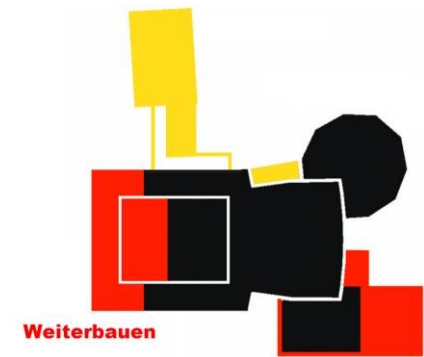
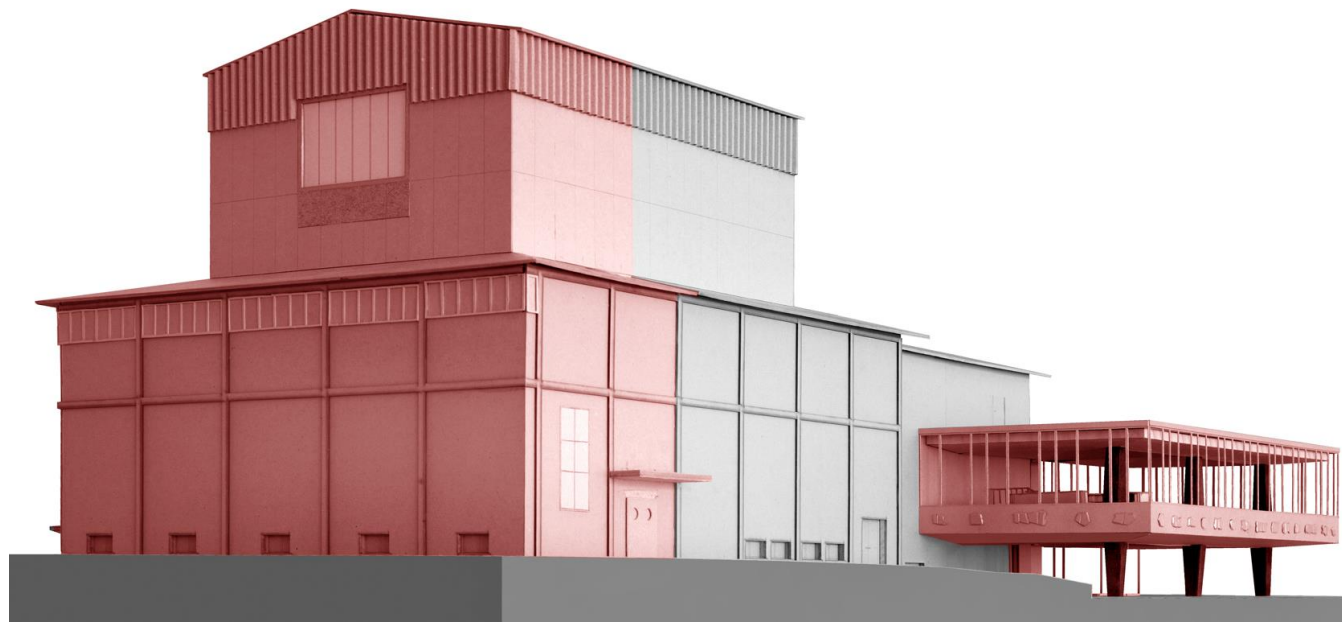
- 1 Garderobenhalle**
- 2 Sachs-Foyer**
- 3 Neues Foyer**
- 4 Theatersaal**
- 5 Bühne**
- 6 Hinterbühne**
- 7 Proberaum**







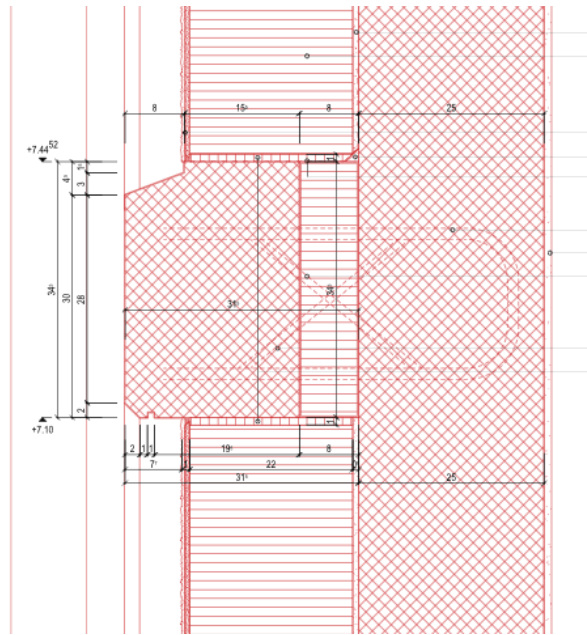
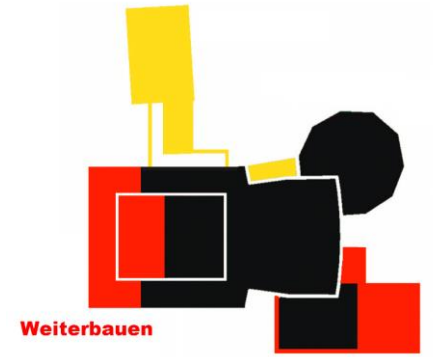
Zustand 2017



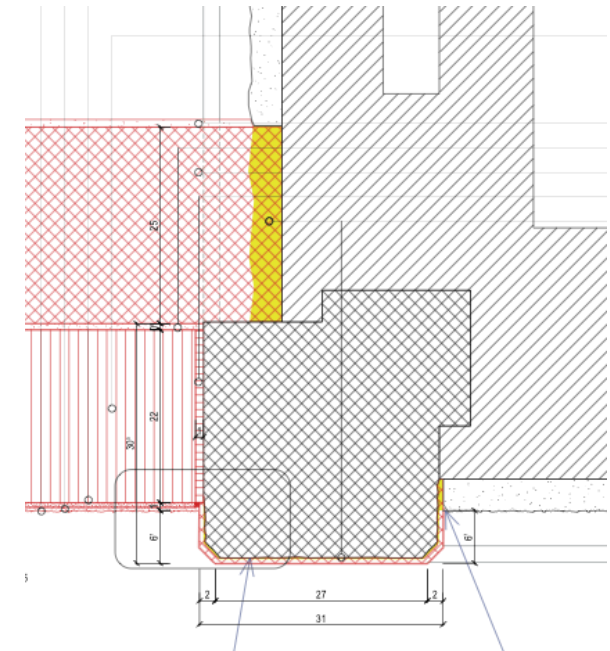




Westfassade - die Nahtstelle zwischen dem Bestand und dem Anbau ist 'unsichtbar'



Vertikalschnitt Aussenwand Backstage Anbau



Horizontalschnitt am Übergang alt / neu

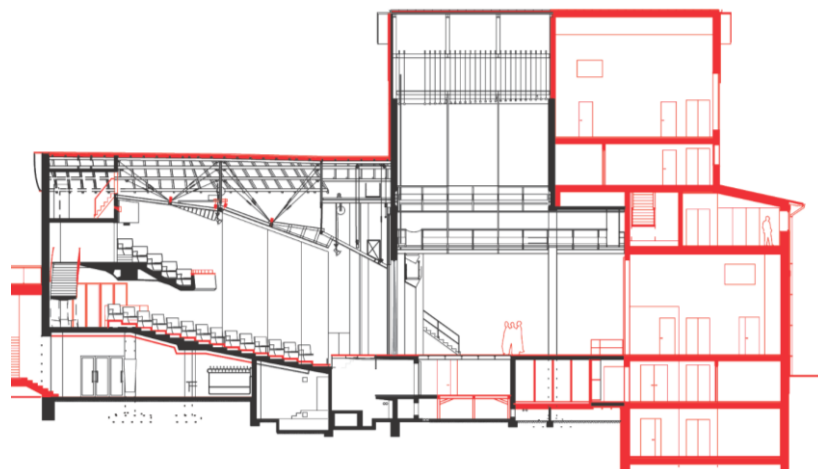




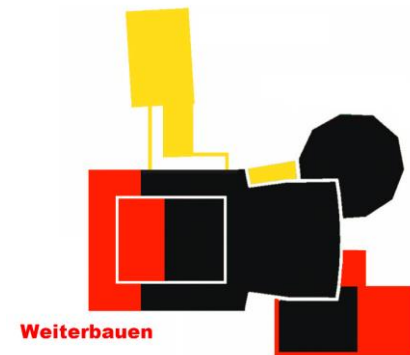
Nahtstelle zwischen Bühne und Hinterbühne



Nordfassade mit Anlieferung Stand 1952



Längsschnitt durch Theatersaal, Bühne und Hinterbühne

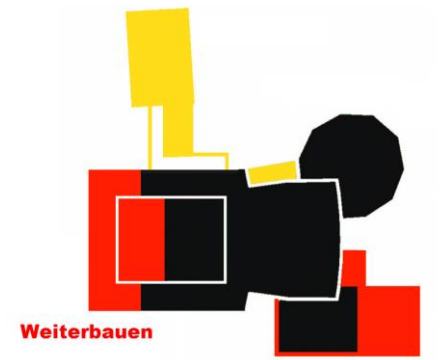


Weiterbauen

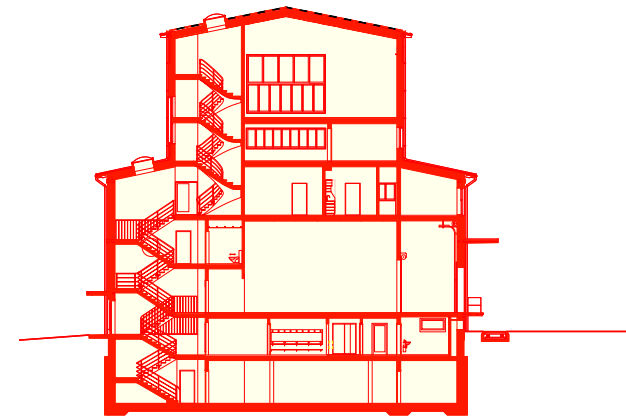


Tragwerkskonzept Hinterbühne. WaltGalmarini Bauingenieure





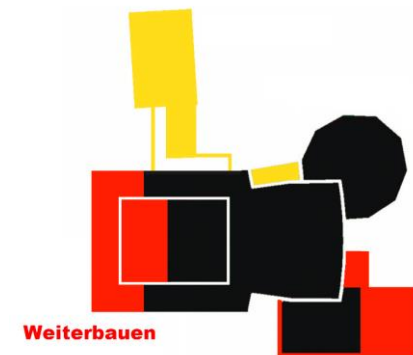
Weiterbauen



Querschnitt durch den Anbau

BACKSTAGE





Weiterbauen



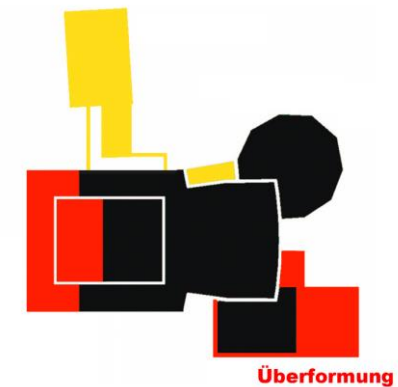
Querschnitt durch den Anbau



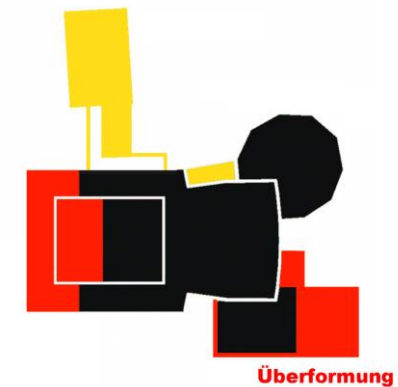


**NEUES FOYER**







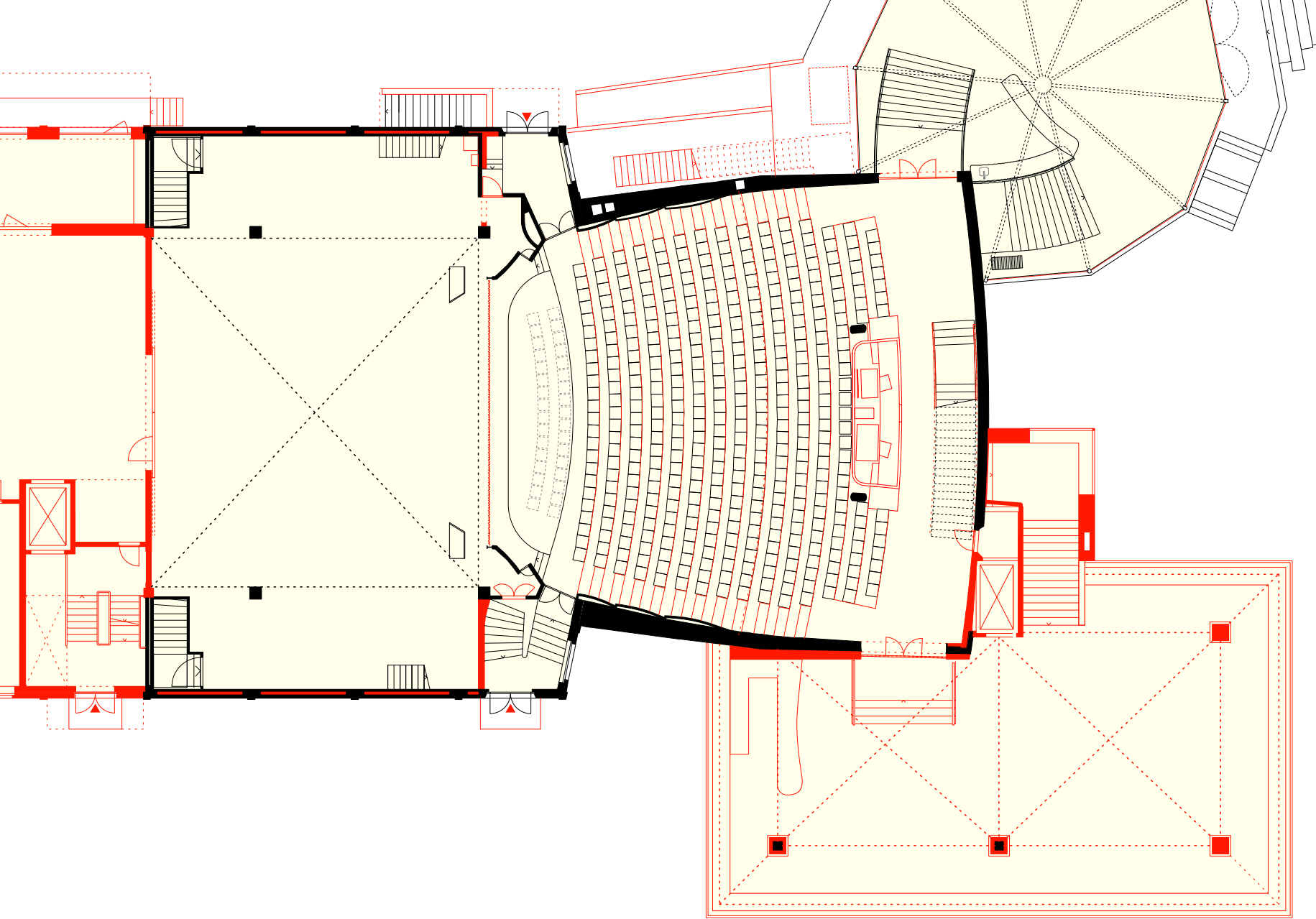


Überformung

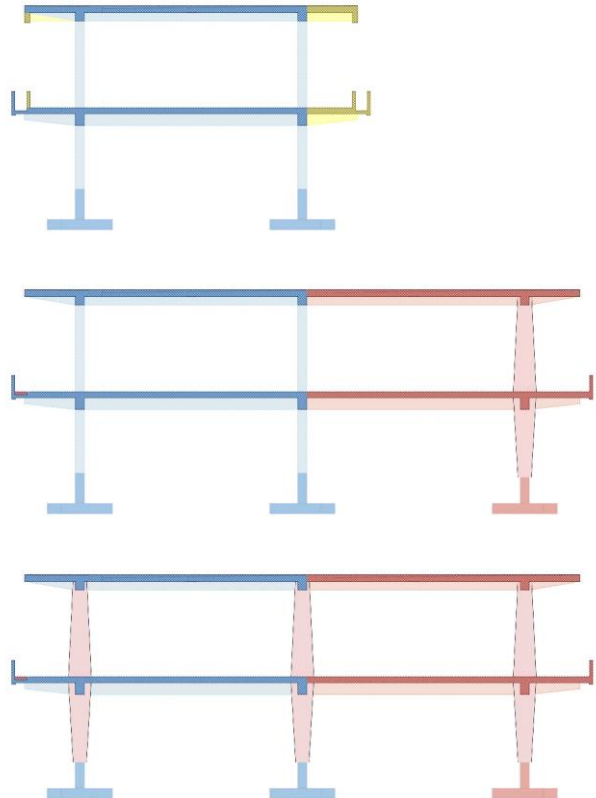


Querschnitt durch Foyer und Aufgang

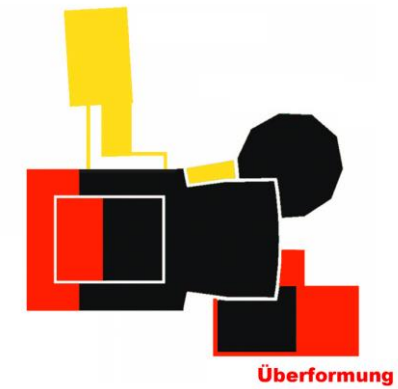
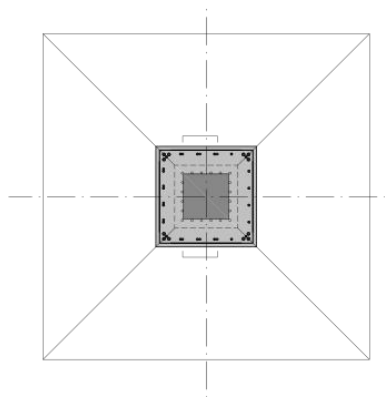
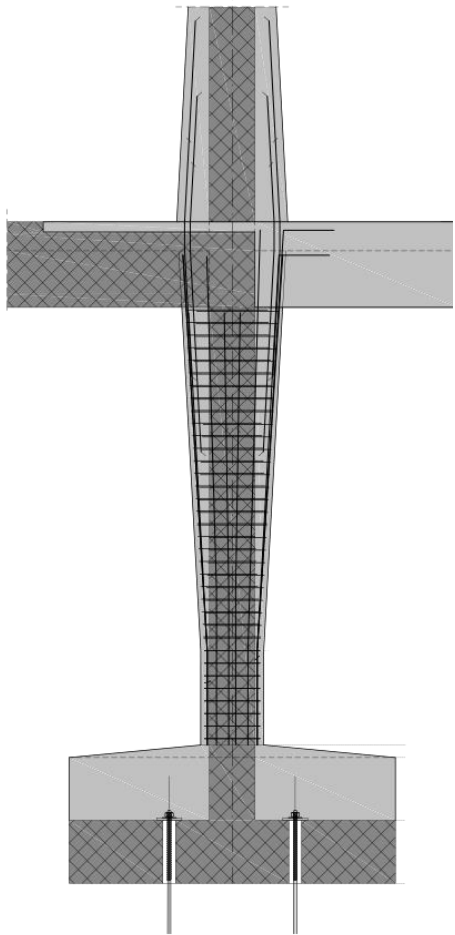








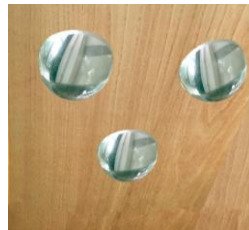




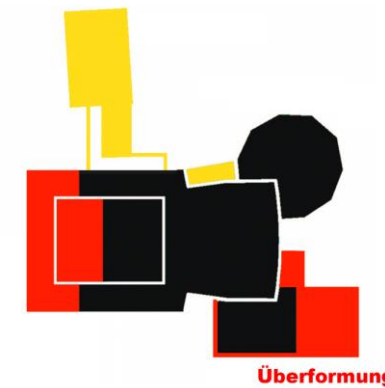
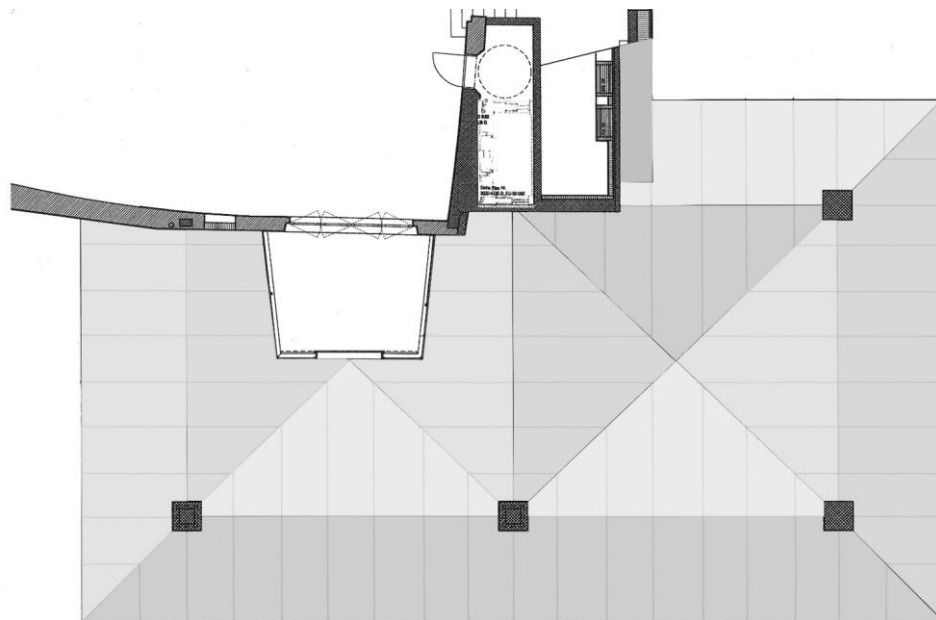
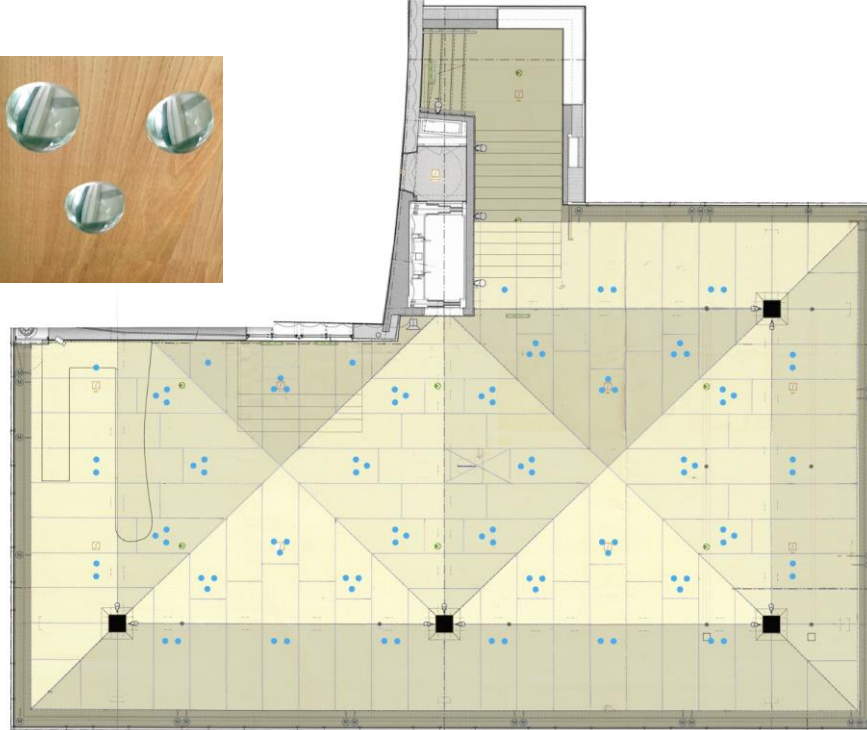
**ÜBERFORMUNG**



Ulmenholz, festliches Licht



Studien zu Ausbau, Deckengeometrie, Licht



Überformung

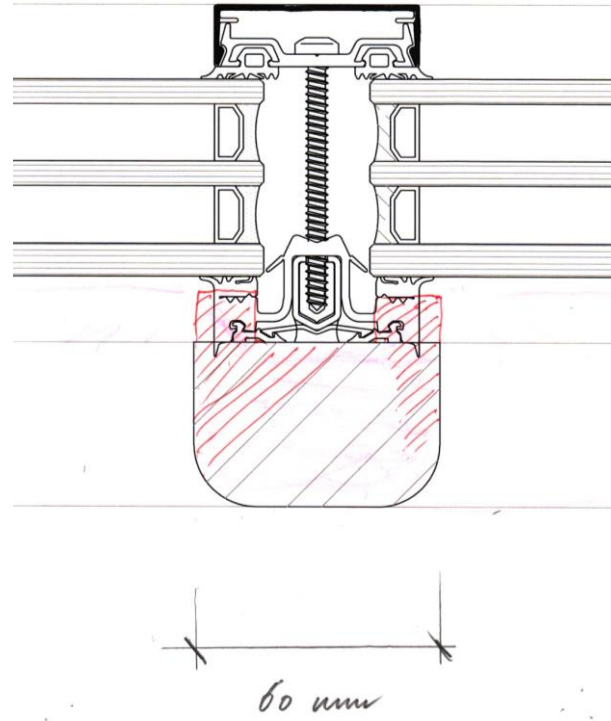
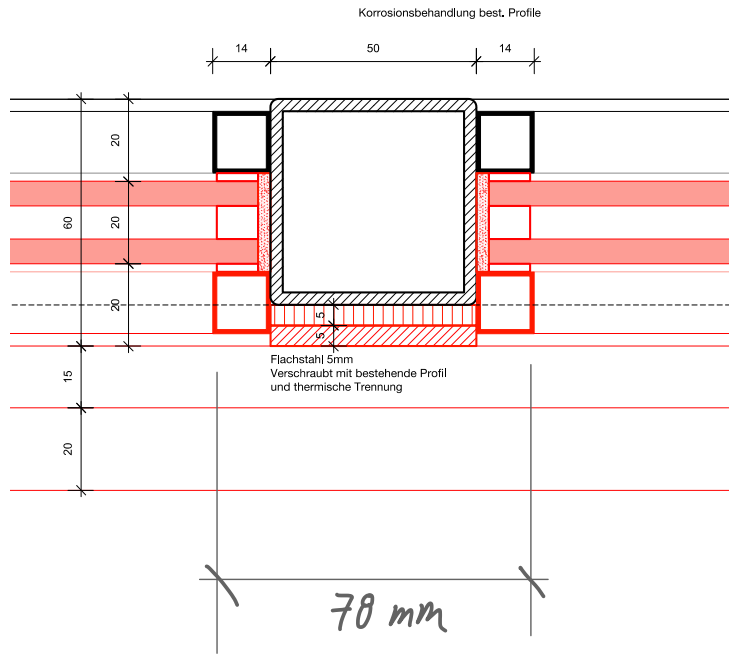
UNTERSICHTEN





IM NEUEN FOYER





ZWEI FOYERS

















**DANKE FÜR IHRE AUFMERKSAMKEIT**