

Bauten in Kalksteinbeton

Steffen Jesberger
endres architekten ag | eth | sia, Baden

endres architekten ag | eth | sia

Steffen Jesberger, Dipl.-Ing. Architektur TU



Berufslaufbahn

- seit 2010 Mitarbeit bei endres architekten ag eth sia, Baden
- 2006–2010 Mitarbeit bei Oliver Schwarz Architekten ETH SIA BSA, Zürich
- 2004 Praktikum in den USA
- 2002–2005 Mitarbeit in diversen Architekturbüros

Ausbildung

- 1999–2005 Studium der Architektur an der Technischen Universität Darmstadt
- 2005 Diplom

Tätigkeitsfeld

Entwurfsplanung mit Schwerpunkt Wohnungsbau

Baustoff Beton



Impression Kalksteinbeton

Regionaler Bezug



Die Läger bei Ennetbaden

Villa am Schartenfels

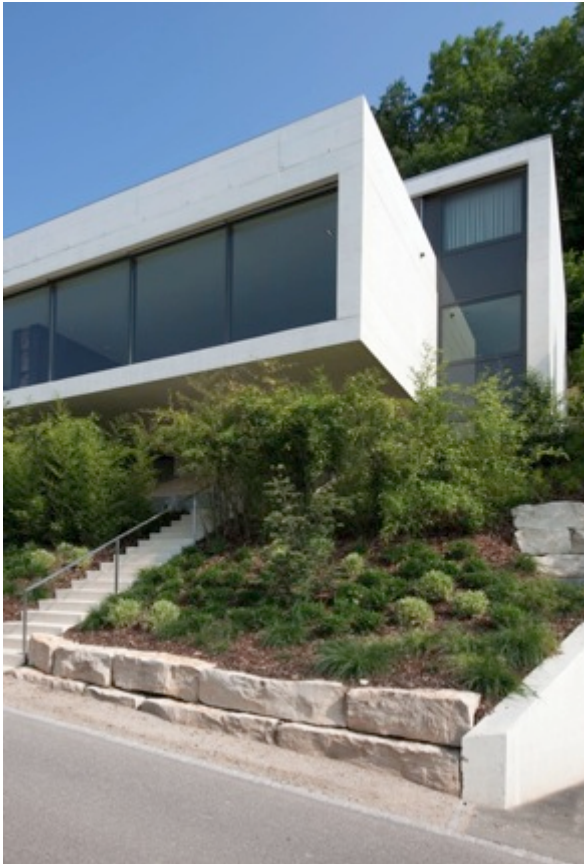


Modellfoto

Villa am Schartenfels



Villa am Schartenfels

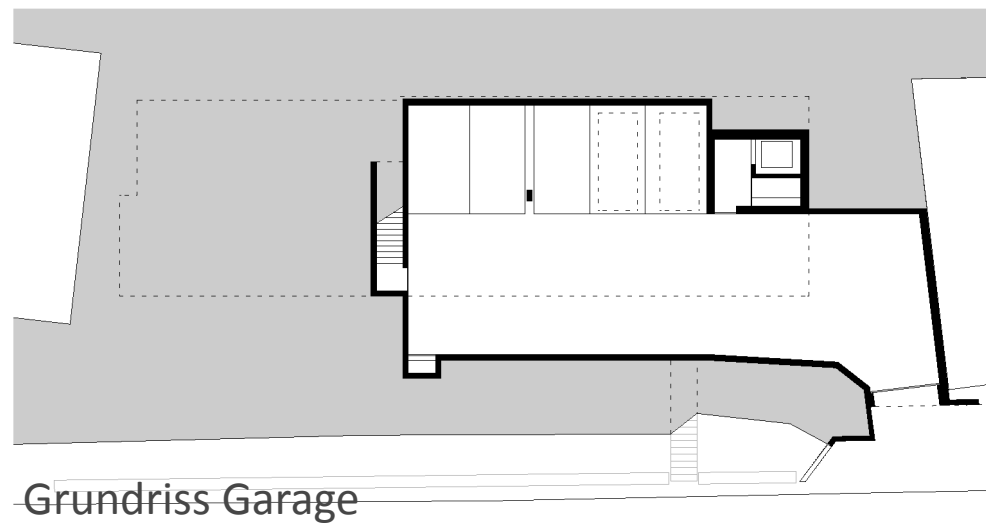
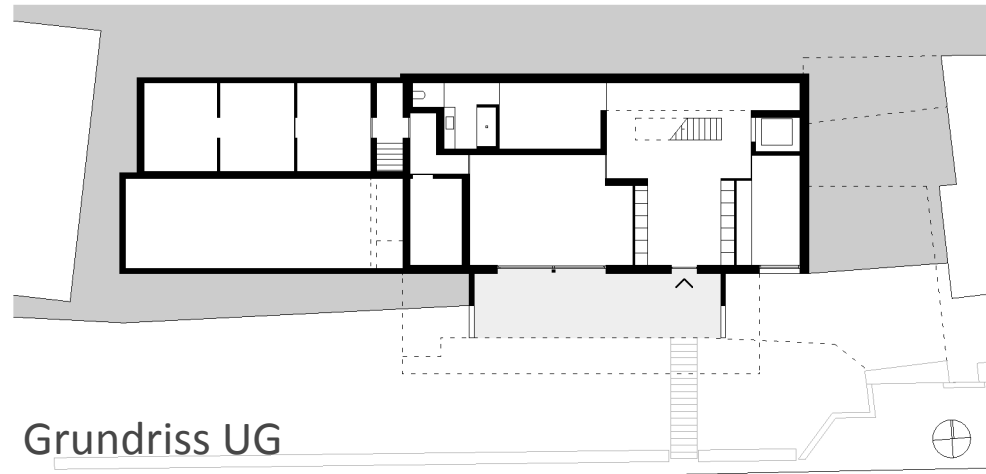


Verschränkung



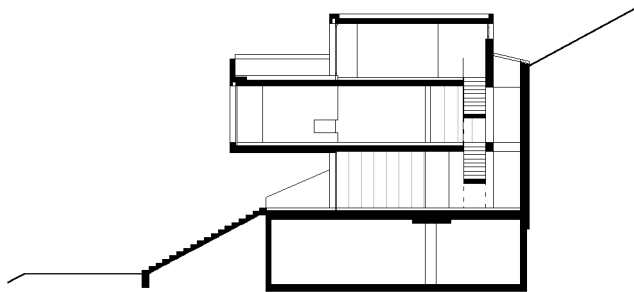
Aussicht

Villa am Schartenfels

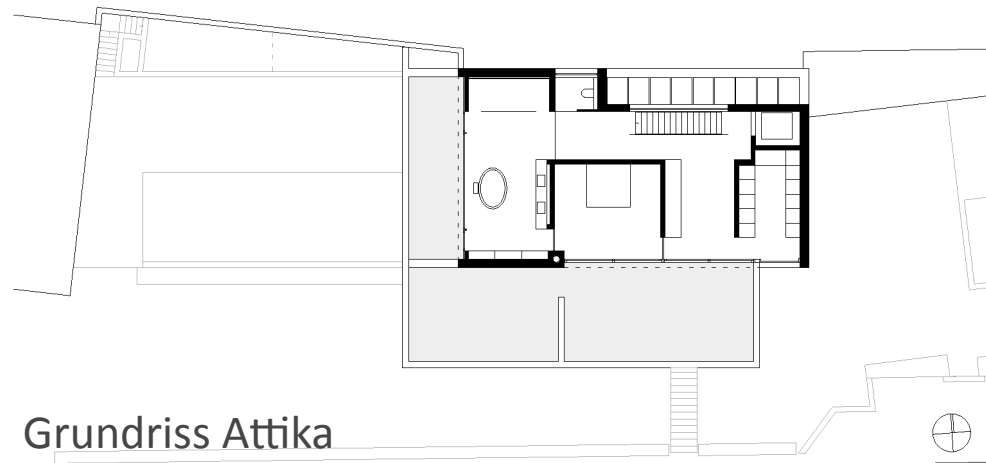


Situation

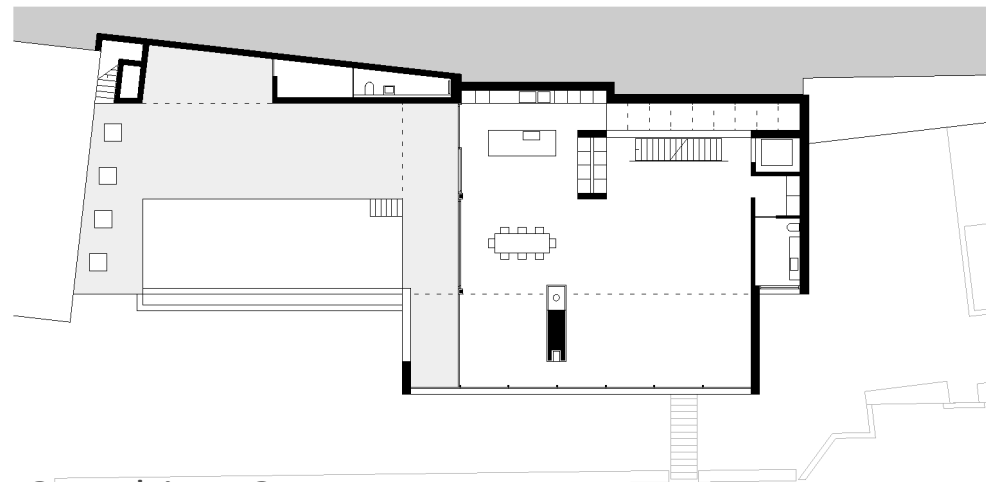
Villa am Schartenfels



Situation



Grundriss Attika



Grundriss EG

Villa am Scharnenfels

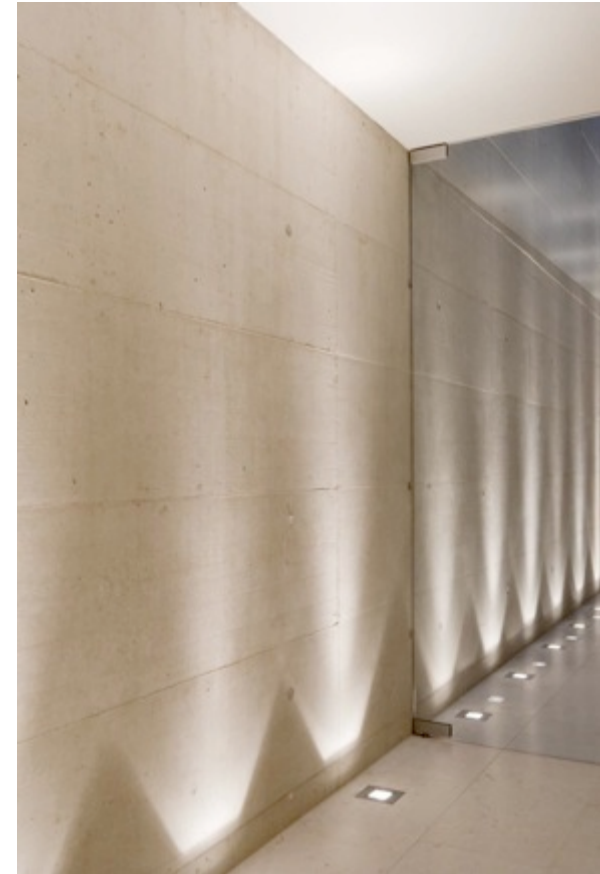


Halle Eingang

Villa am Schartenfels



Halle



Villa am Schartenfels



Wohnebene

Villa am Schartenfels



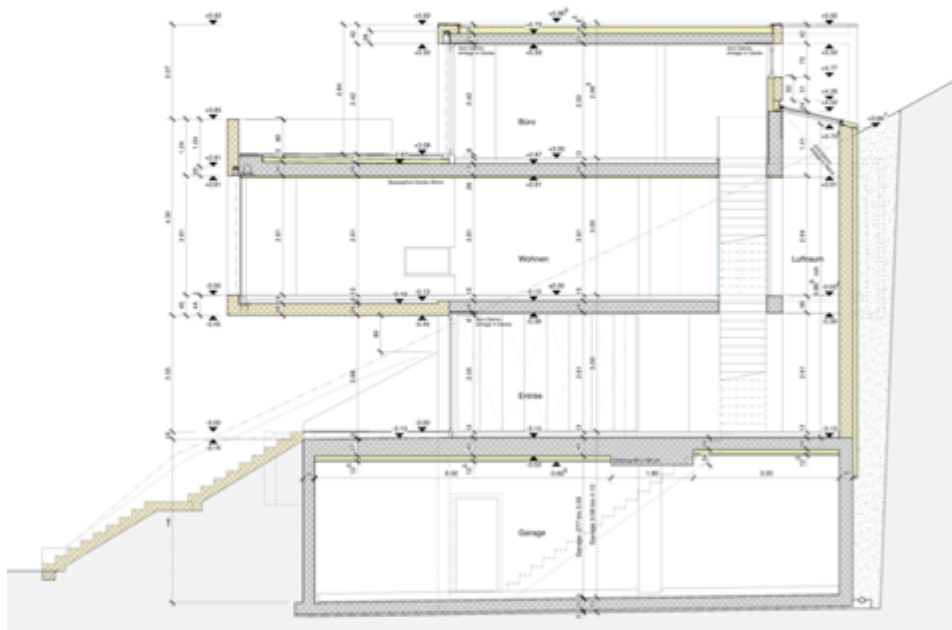
Innen - Aussen

Villa am Schartenfels

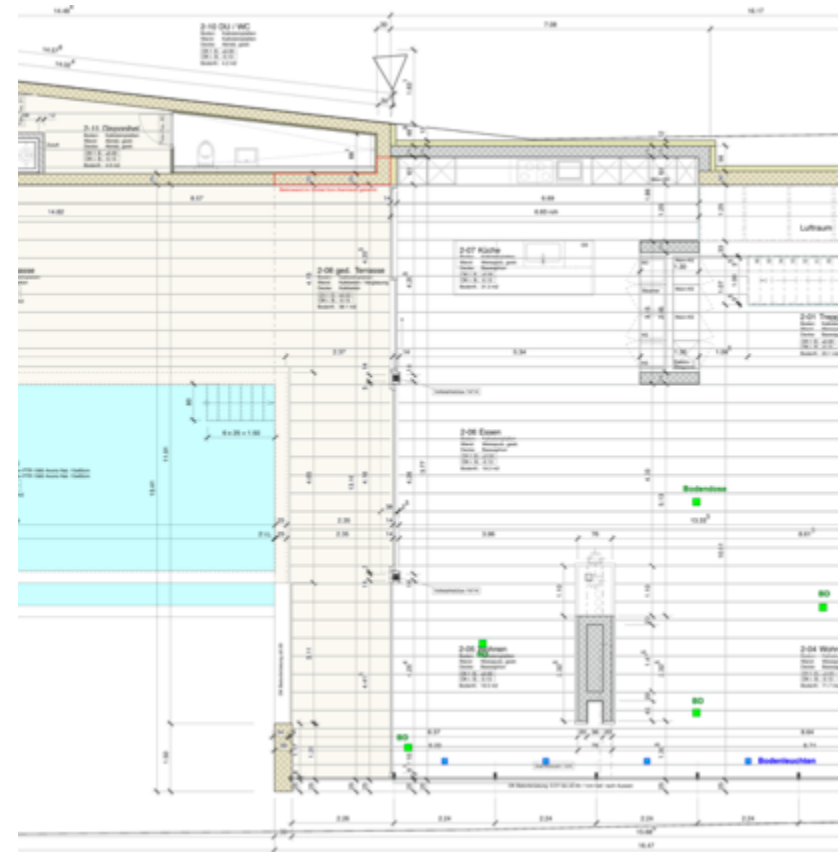


Aussen - Innen

Villa am Schartenfels



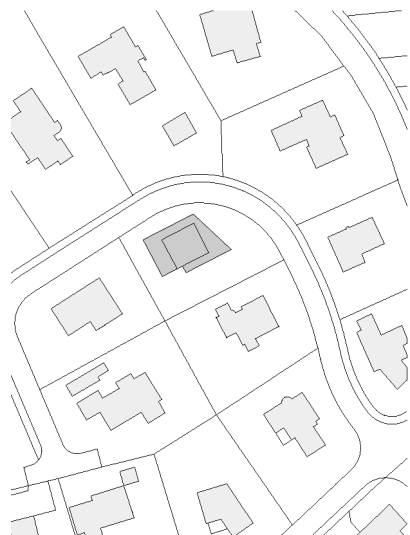
Werkplan



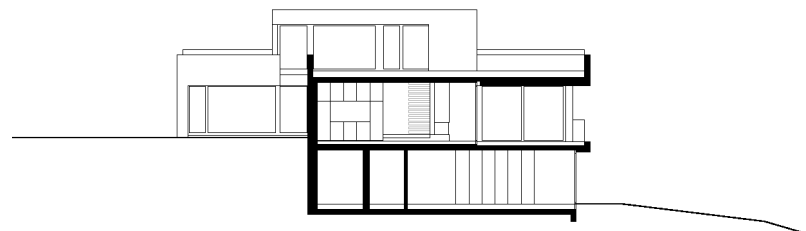
Einfamilienhaus in Bergdietikon



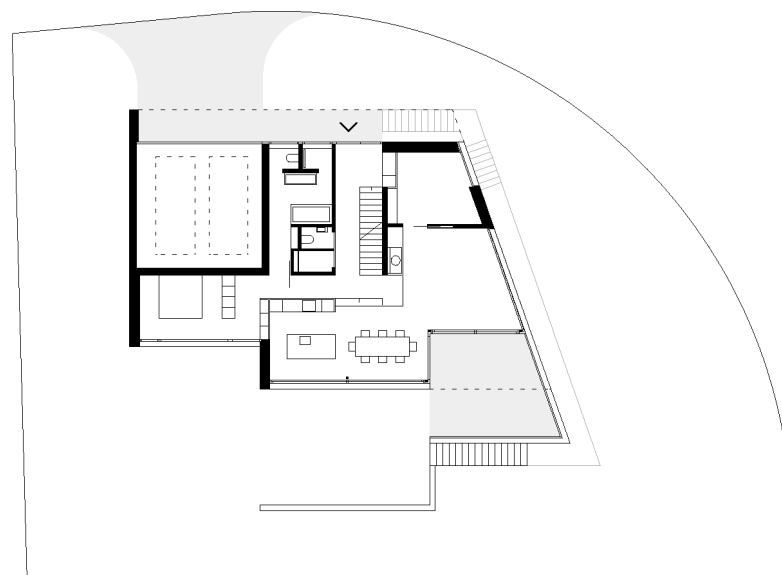
Einfamilienhaus in Bergdietikon



Situation

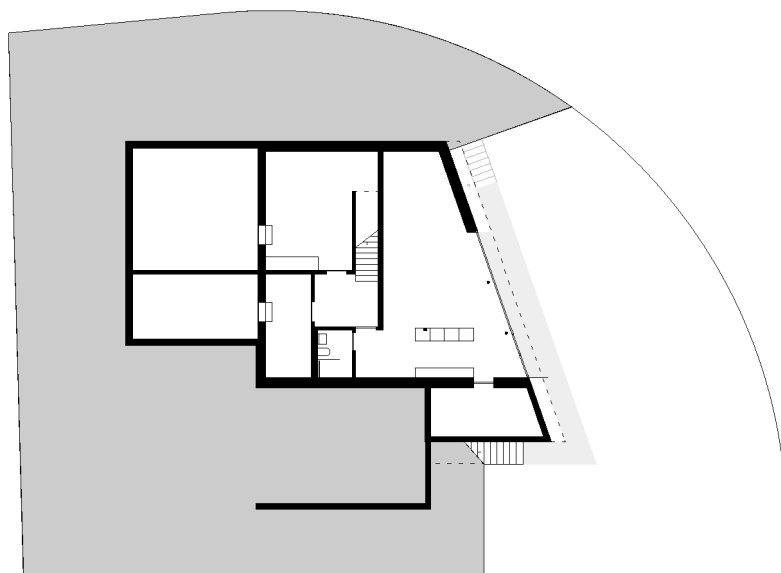


Schnitt

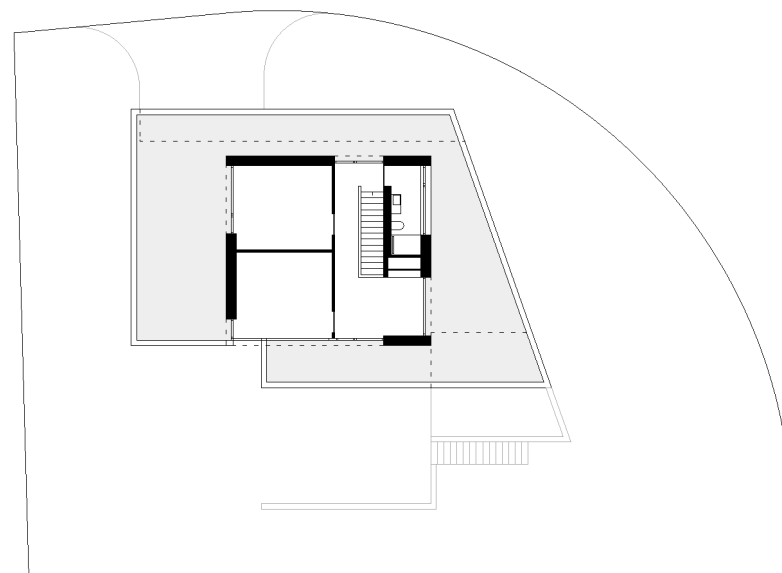


Grundriss EG

Einfamilienhaus in Bergdietikon



Grundriss UG



Grundriss Attika



Einfamilienhaus in Bergdietikon



Sitzplatz



Einfamilienhaus in Bergdietikon

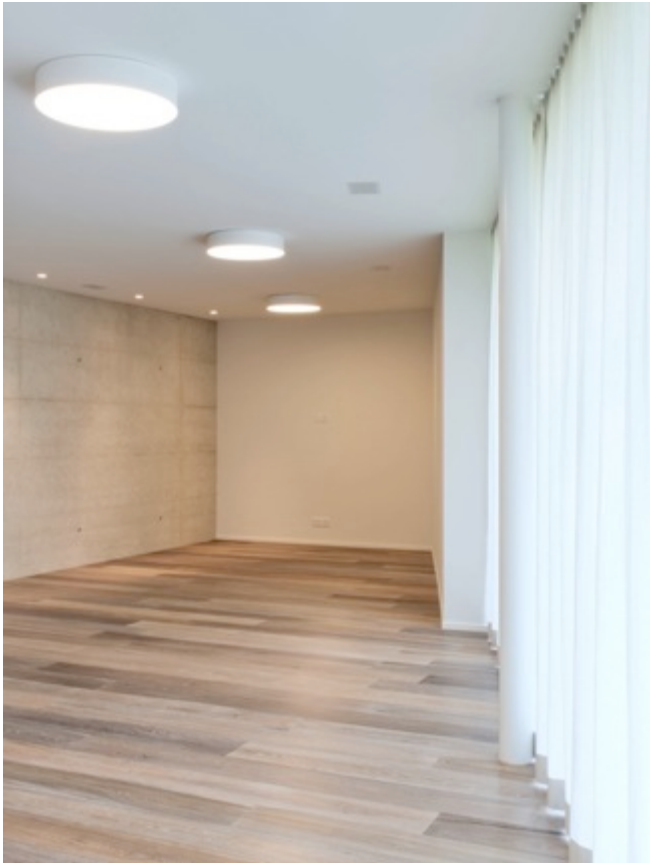


Detail Treppe



Wohnraum

Einfamilienhaus in Bergdietikon



Studio UG



Wohnraum

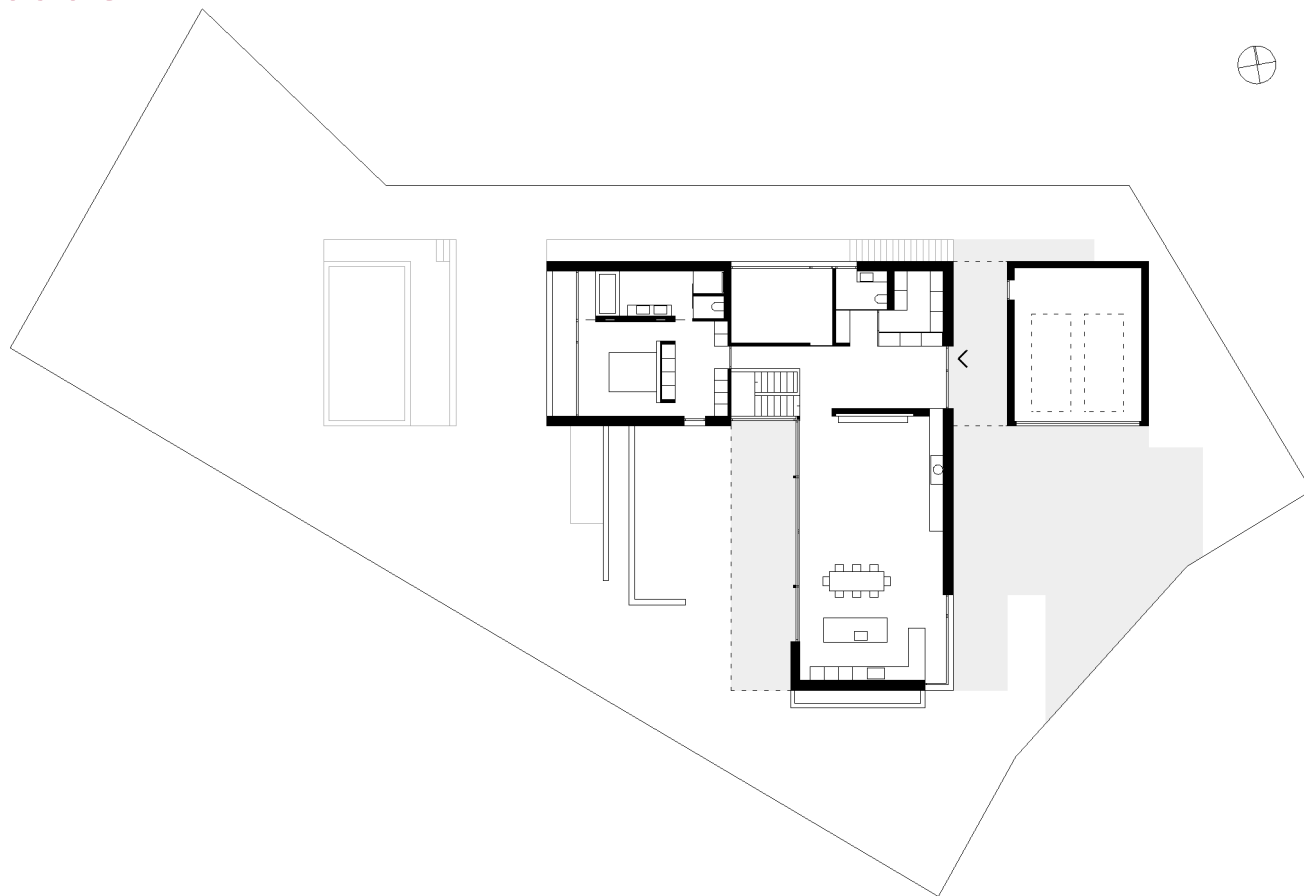
Bungalow in Ennetbaden



Bungalow in Ennetbaden

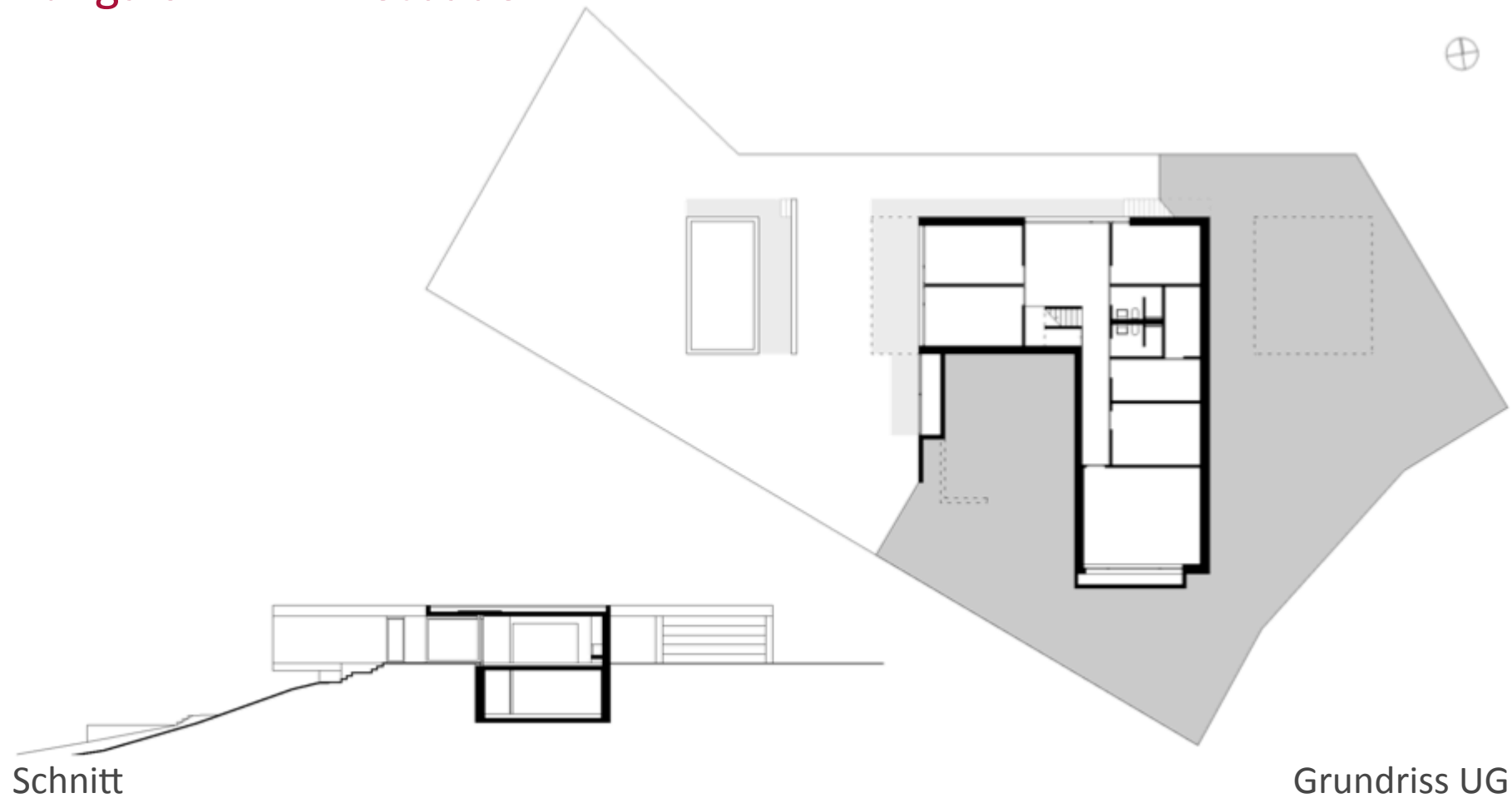


Situation



Grundriss EG

Bungalow in Ennetbaden



Bungalow in Ennetbaden

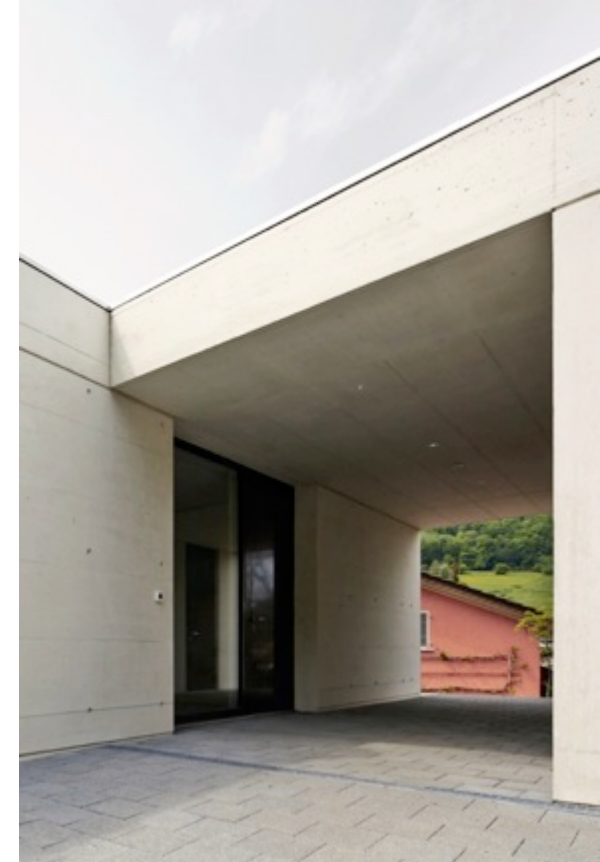


Terrasse

Bungalow in Ennetbaden



Terrasse



Eingang

Bungalow in Ennetbaden

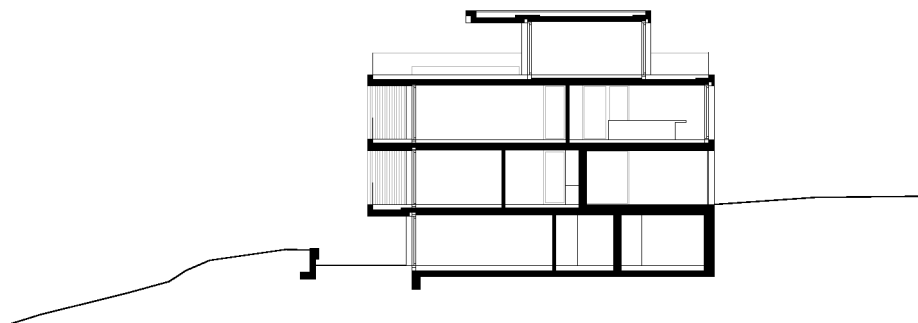


Südostseite

Lofthaus in Hertenstein



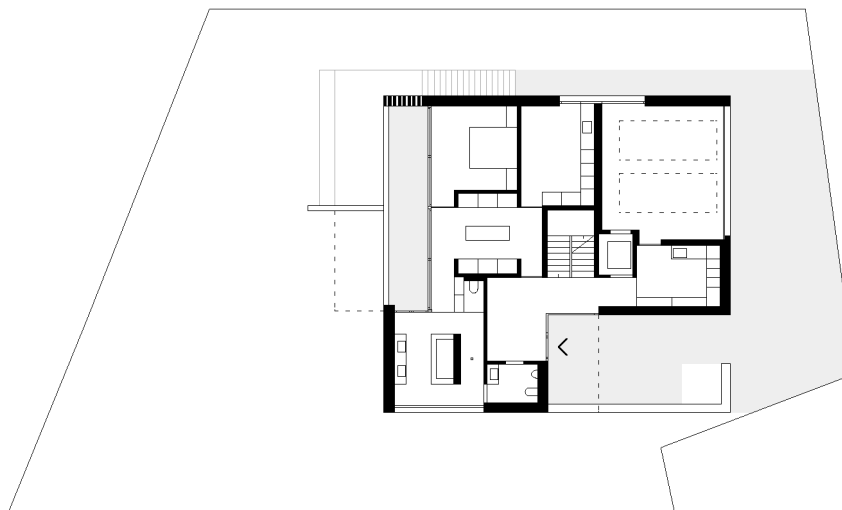
Lofthaus in Hertenstein



Schnitt

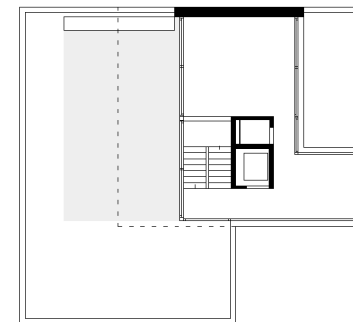


Situation



Grundriss EG

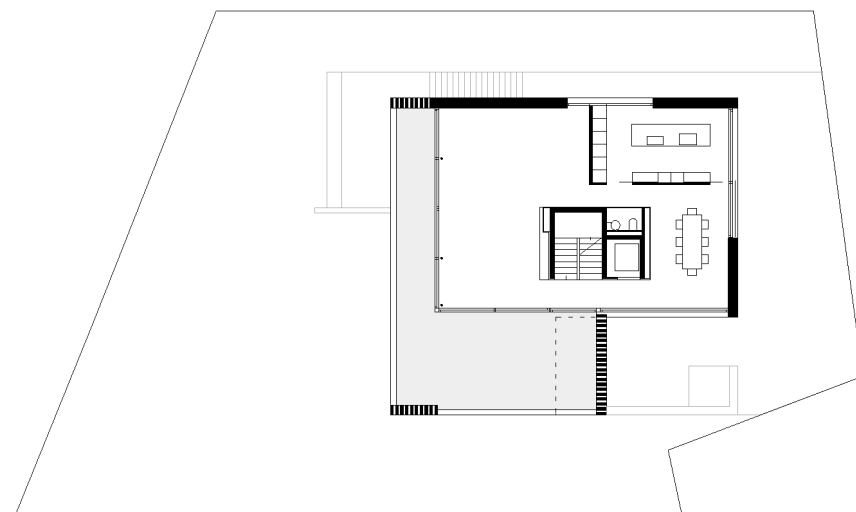
Lofthaus in Hertenstein



Grundriss Attika



Grundriss UG



Grundriss OG

Lofthaus in Hertenstein



Südfassade



Detail Lamellen

Lofthaus in Hertenstein



Eingangssituation



Nordost

Lofthaus in Hertenstein



Ansicht Südwest



Nordwest

Lofthaus in Hertenstein

