



**Masswerk von Raum und Tragstruktur
für das St. Galler Stickereiquartier**

Corinna Menn

Corinna Menn



Ausbildung

- 1994–2000 Architekturstudium ETH Zürich und der Graduate School of Design, Harvard University in Cambridge MA USA
- 1996/1997 Praktikum bei Prof. Hans Kollhoff, Berlin
- 2000 Diplom als Architektin, ETH Zürich

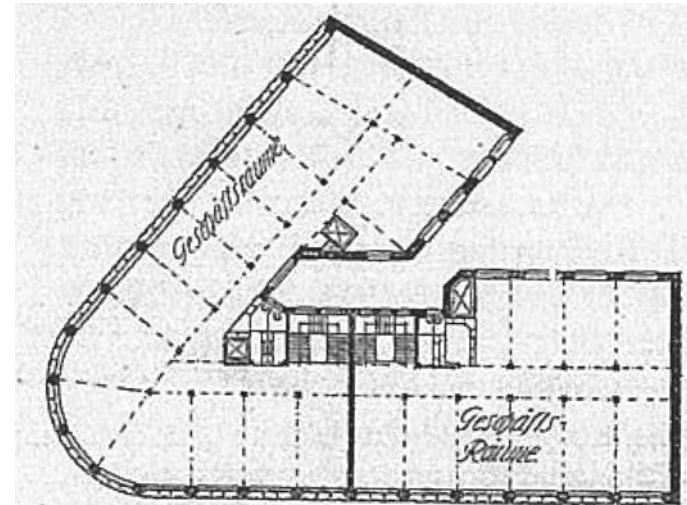
Berufslaufbahn

- 2001–2002 Projektarchitektin bei Herzog & de Meuron Architekten, Basel
- seit 2002 Eigenes Architekturbüro in Zürich/ Chur
- 2009–2010 Dozentin für Entwurf und Konstruktion an der Hochschule Luzern, Technik & Architektur
- seit 2018 Dozentin für Architektur und Entwurf, Universität Liechtenstein

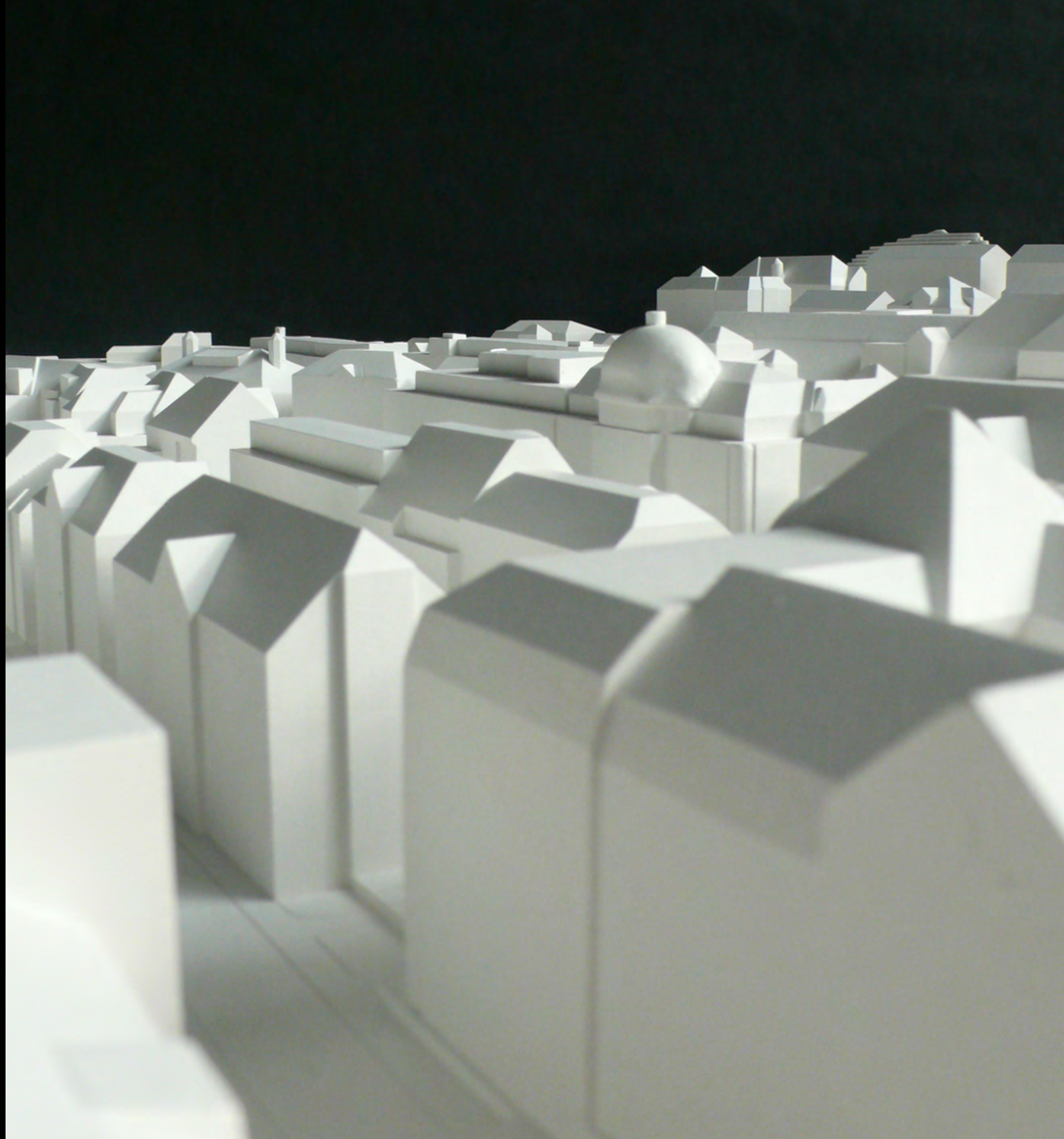




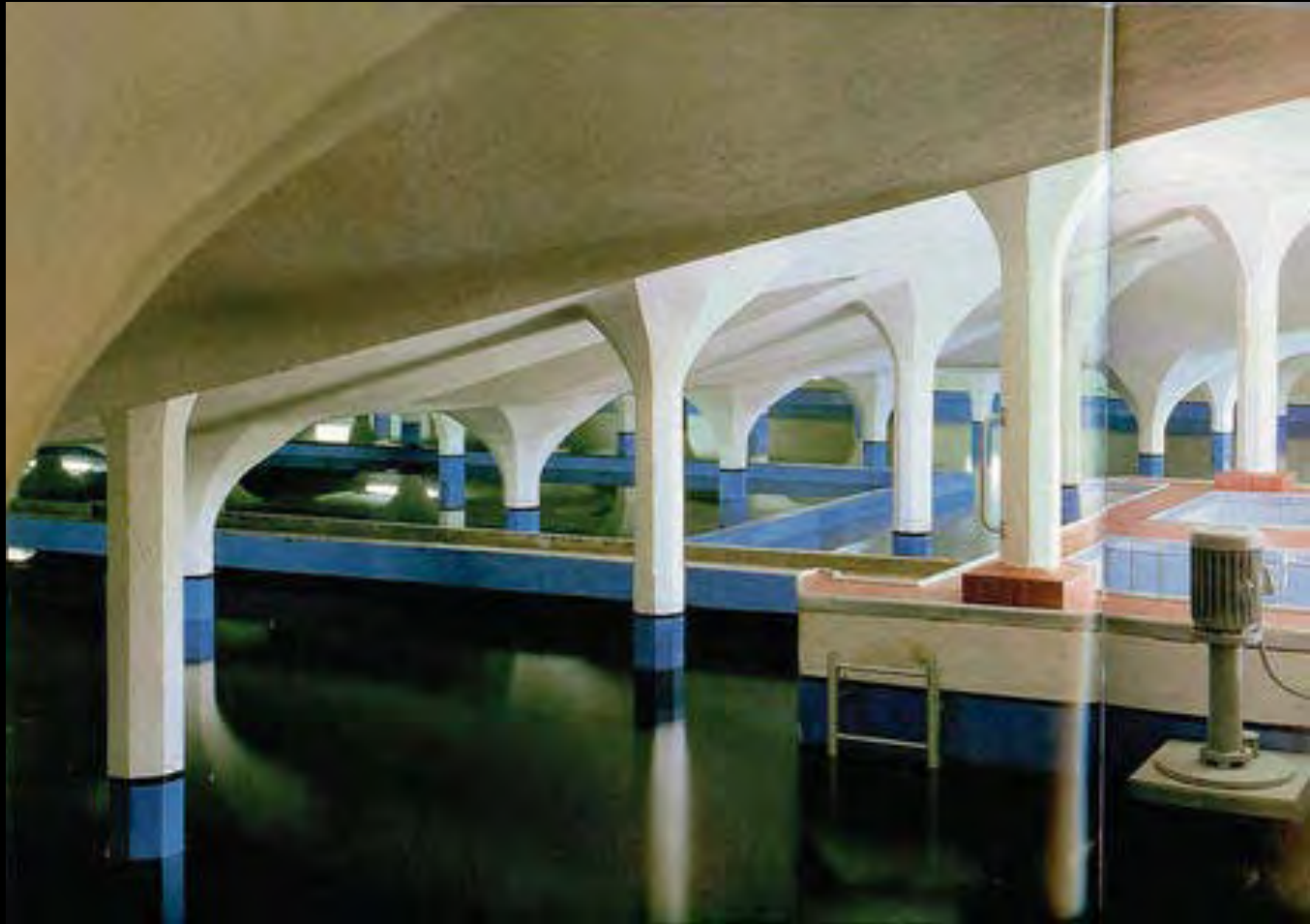
St. Gallen, Bahnhofgebäude u. Bahnhofplatz

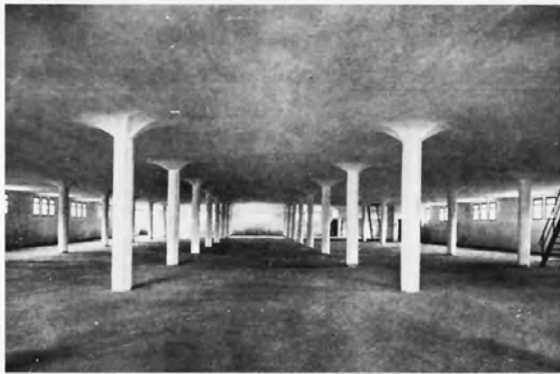


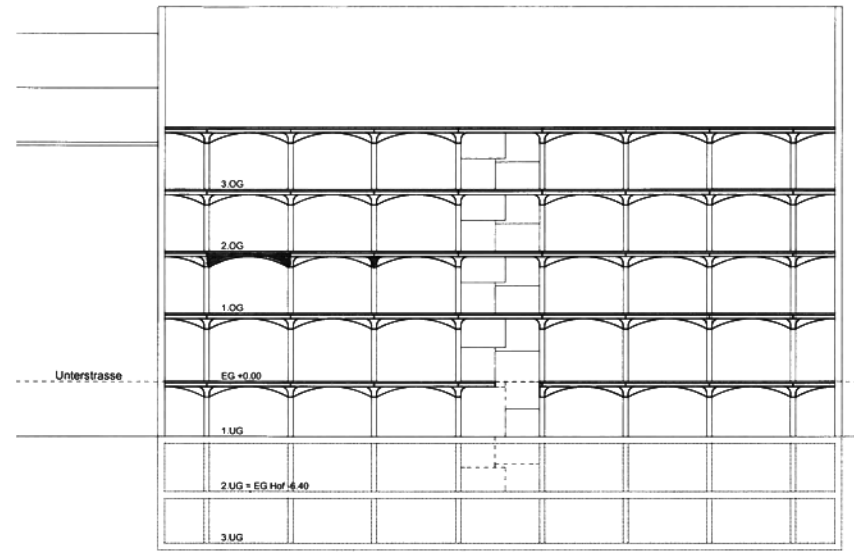
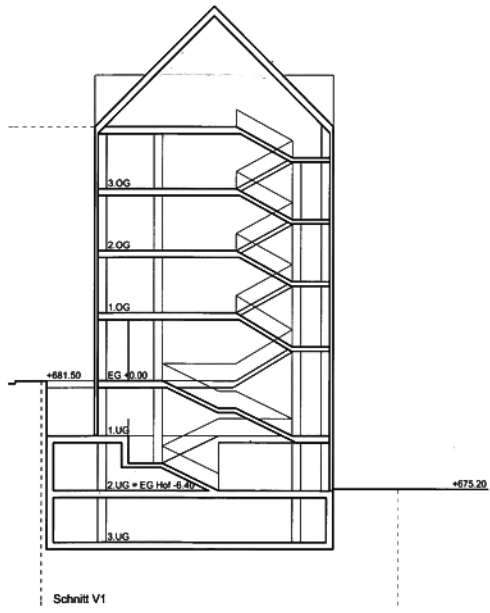




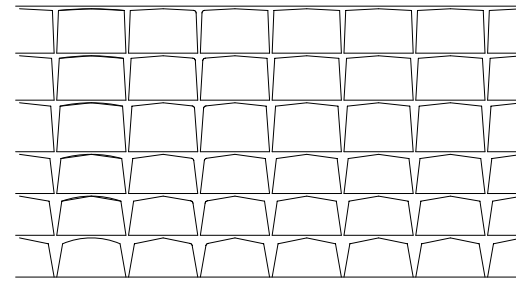
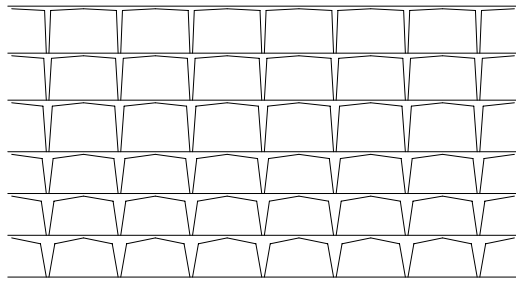
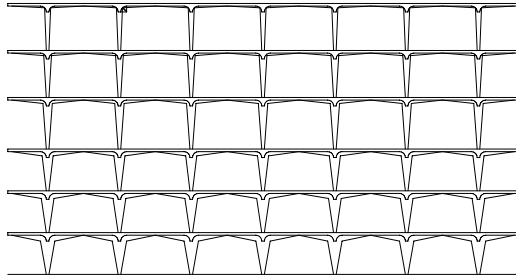
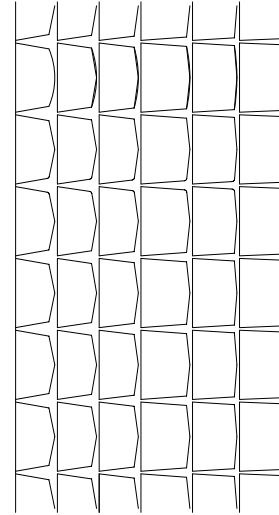
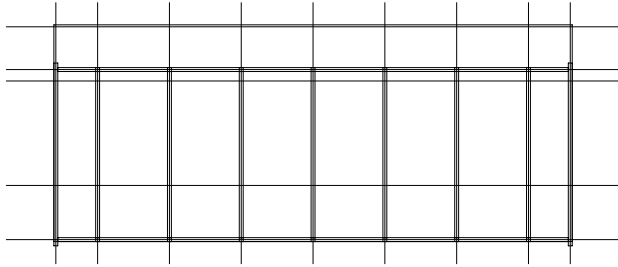


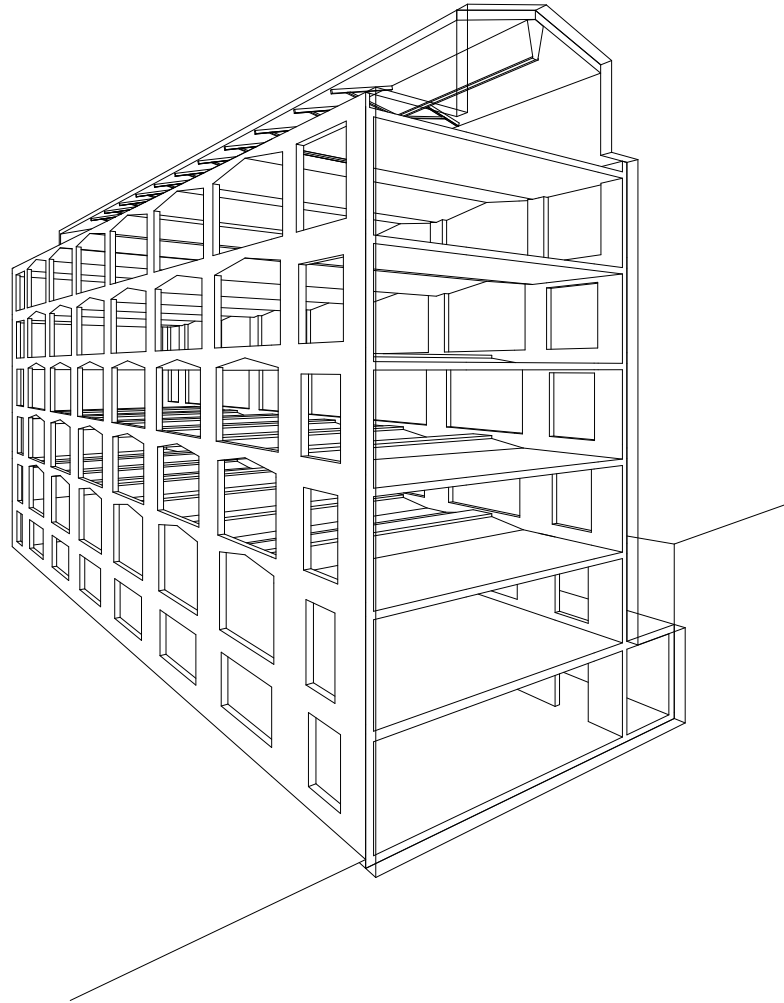


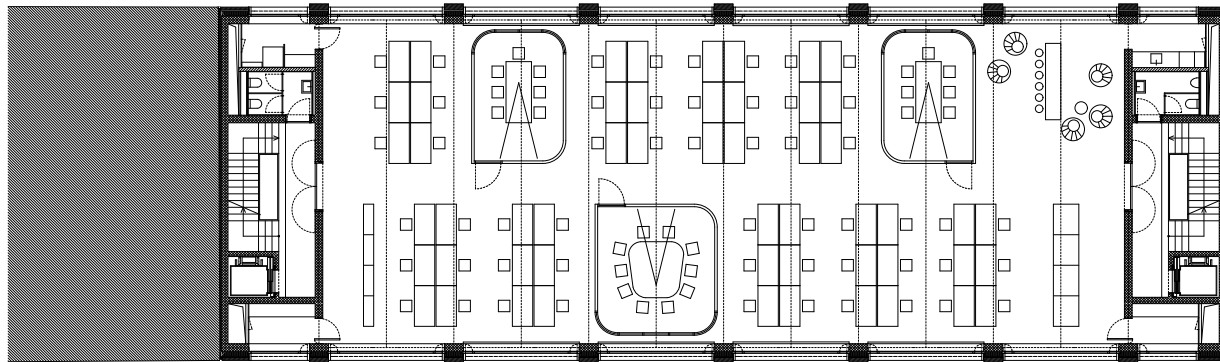
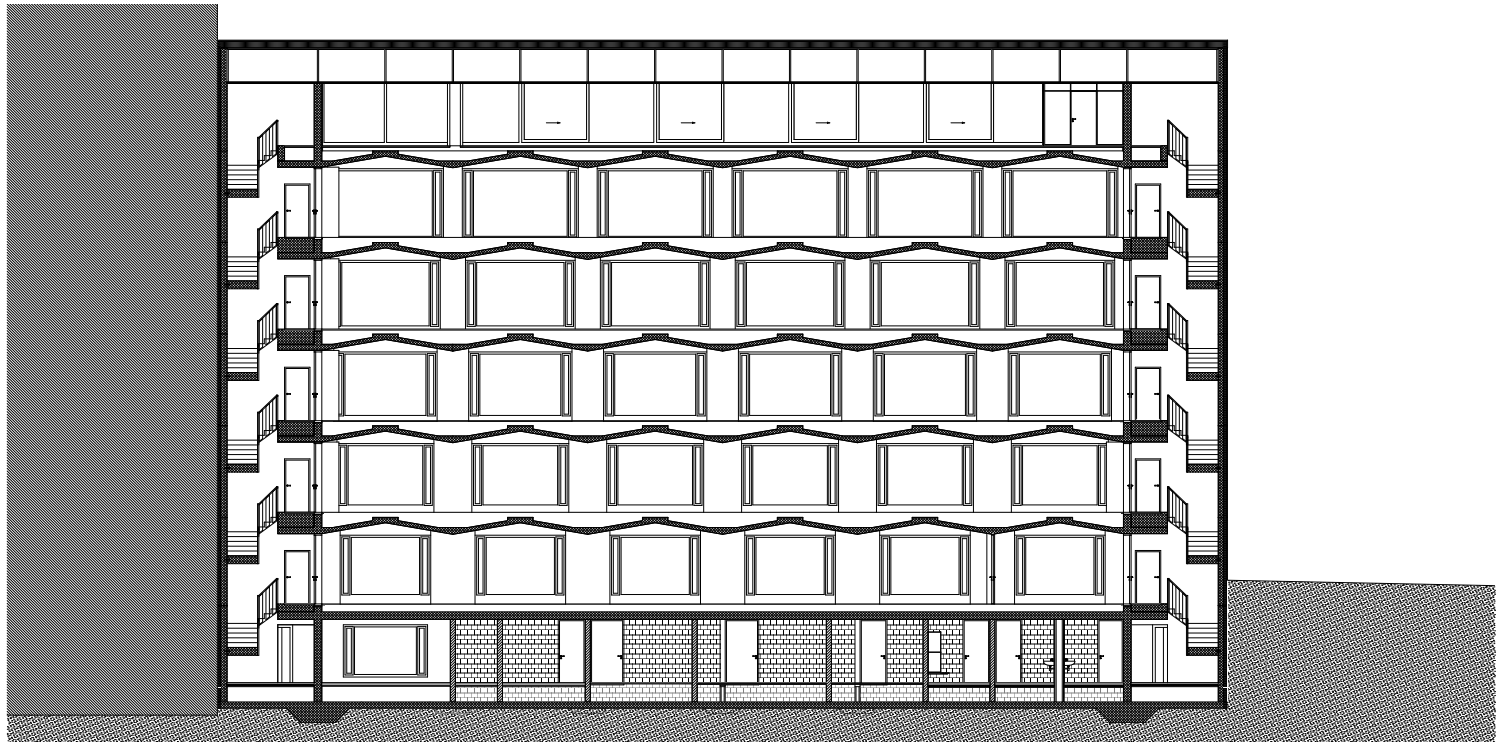


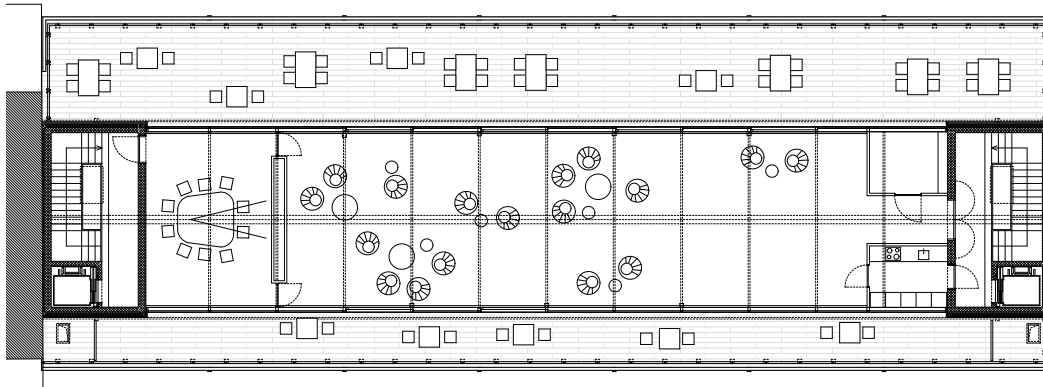
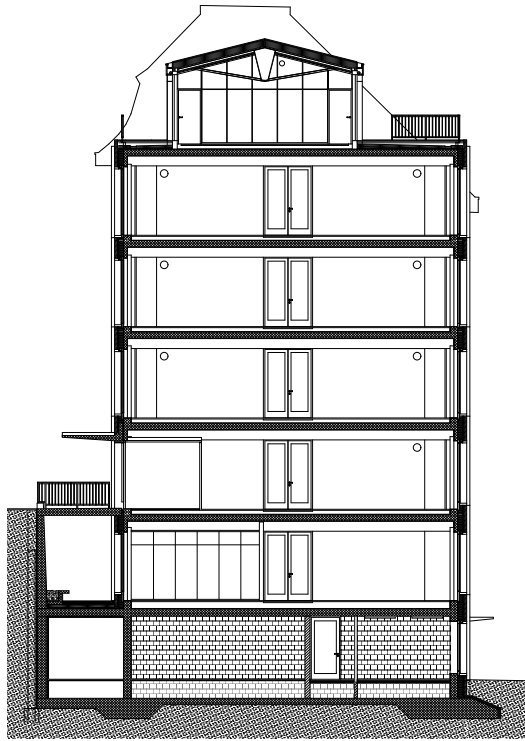


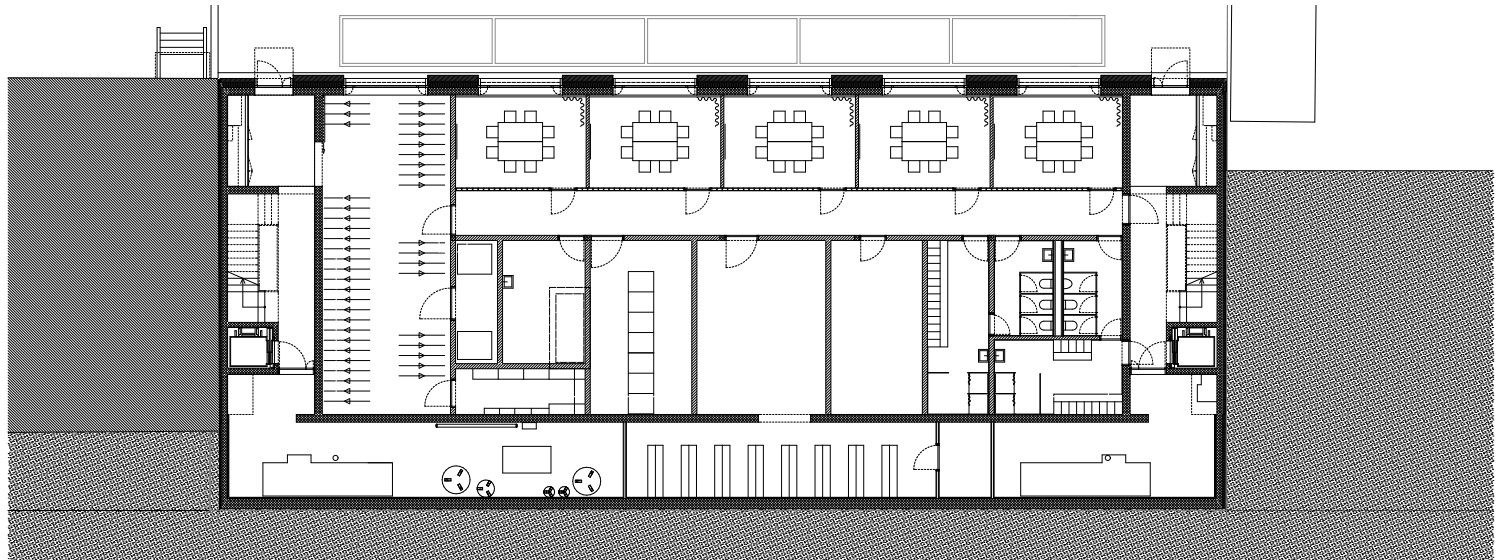
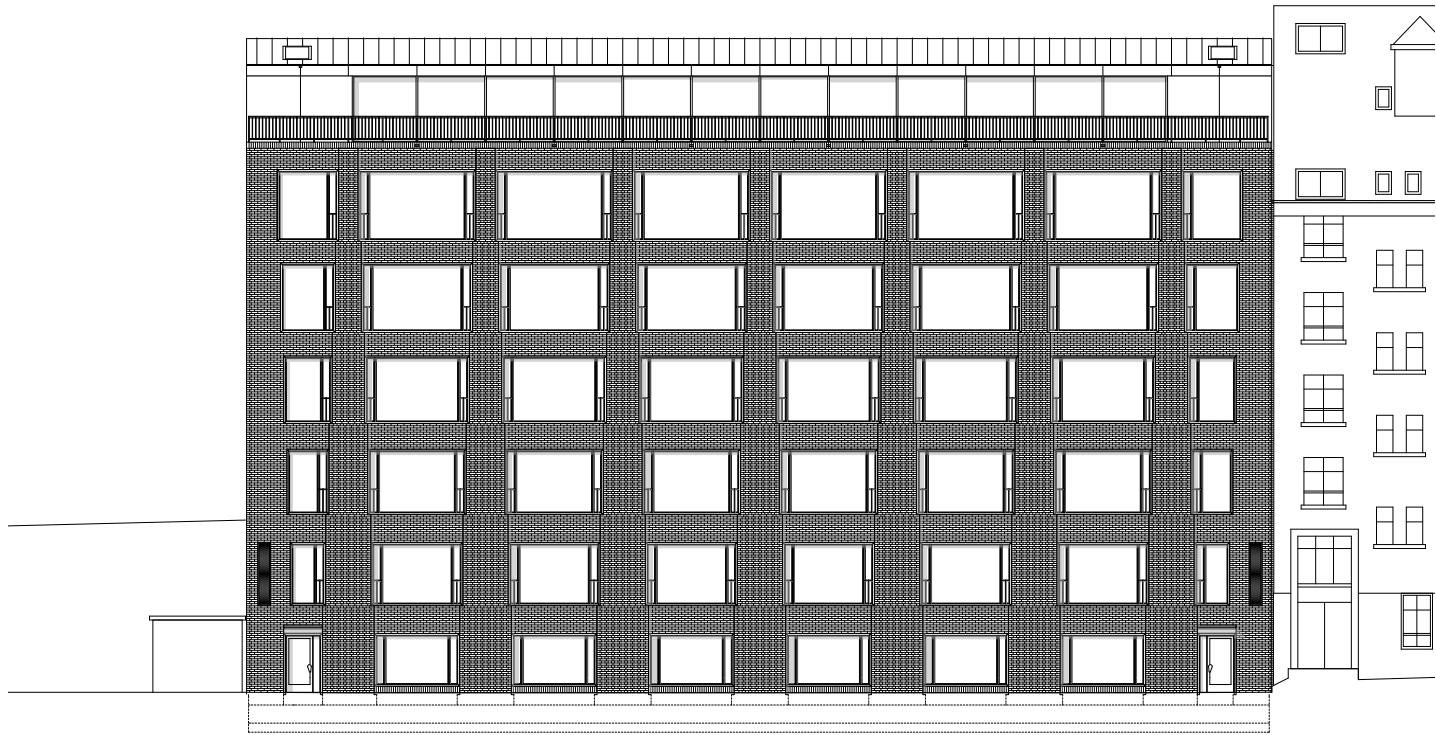
12.9.12



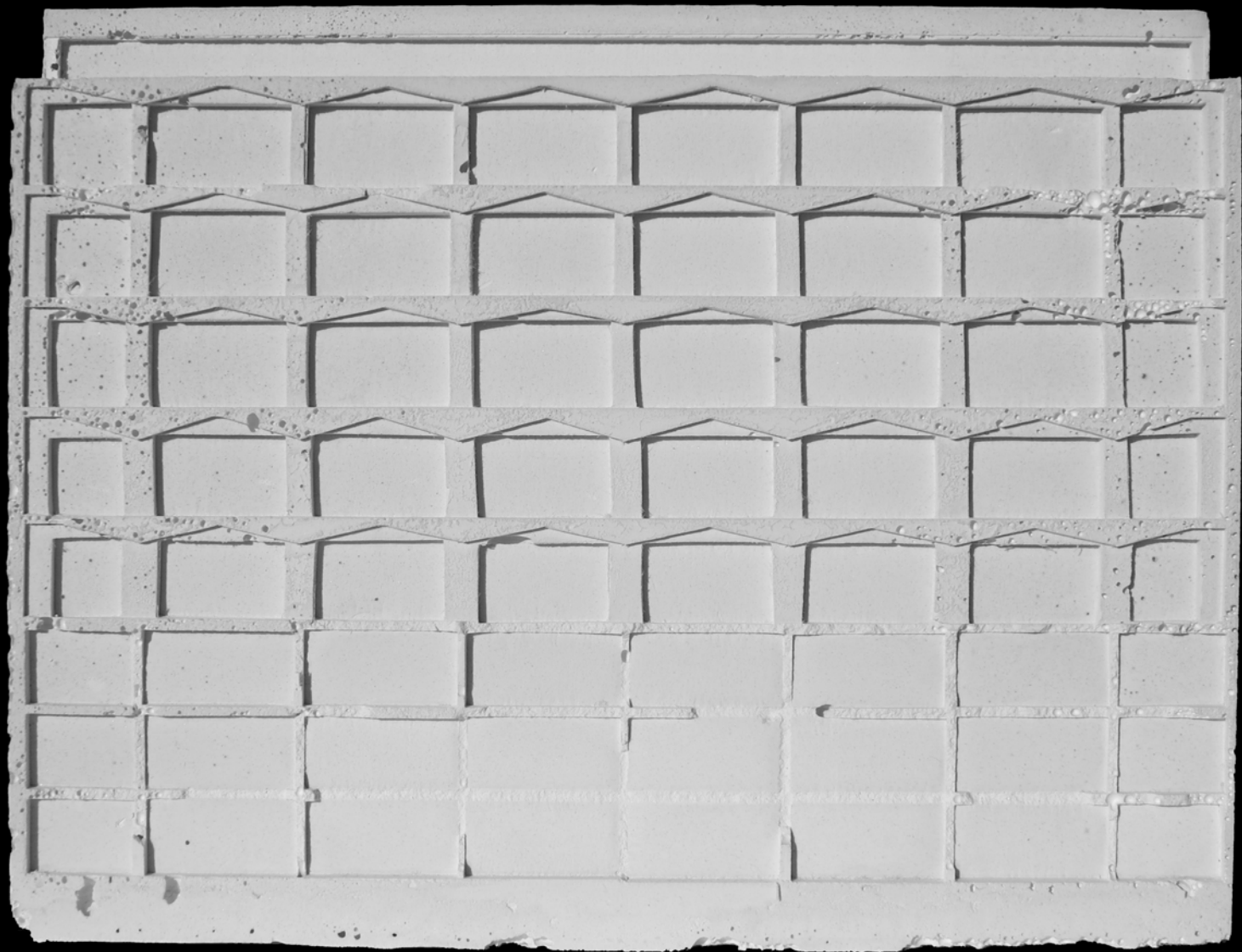


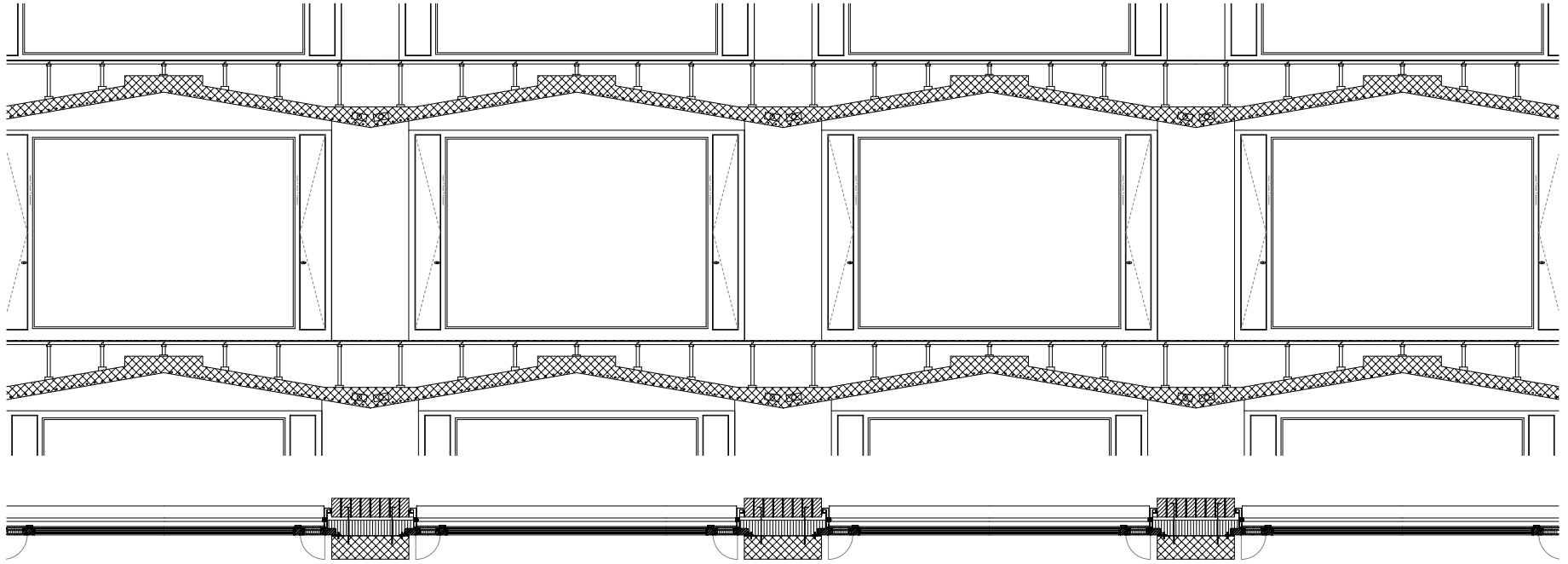






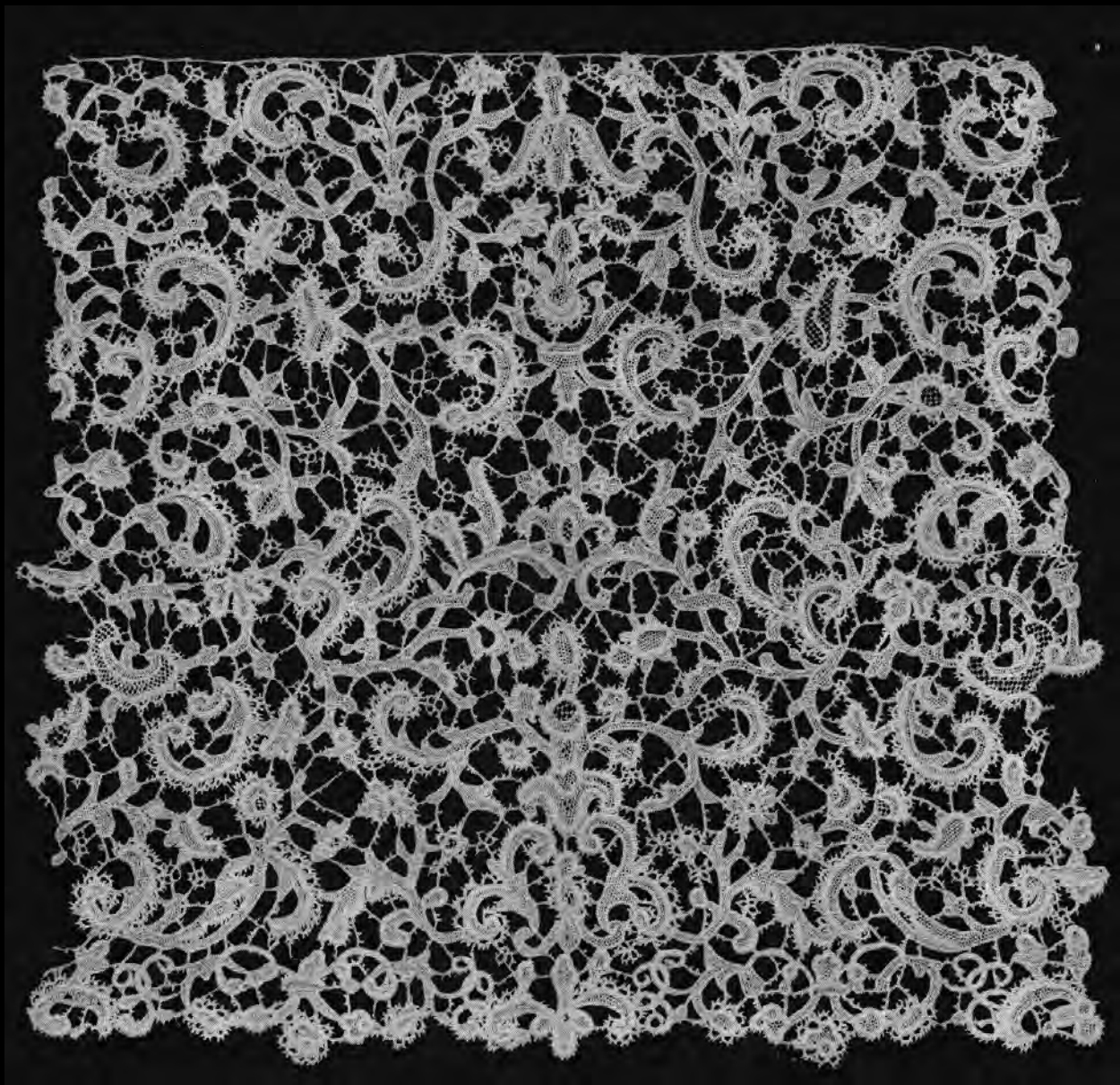






















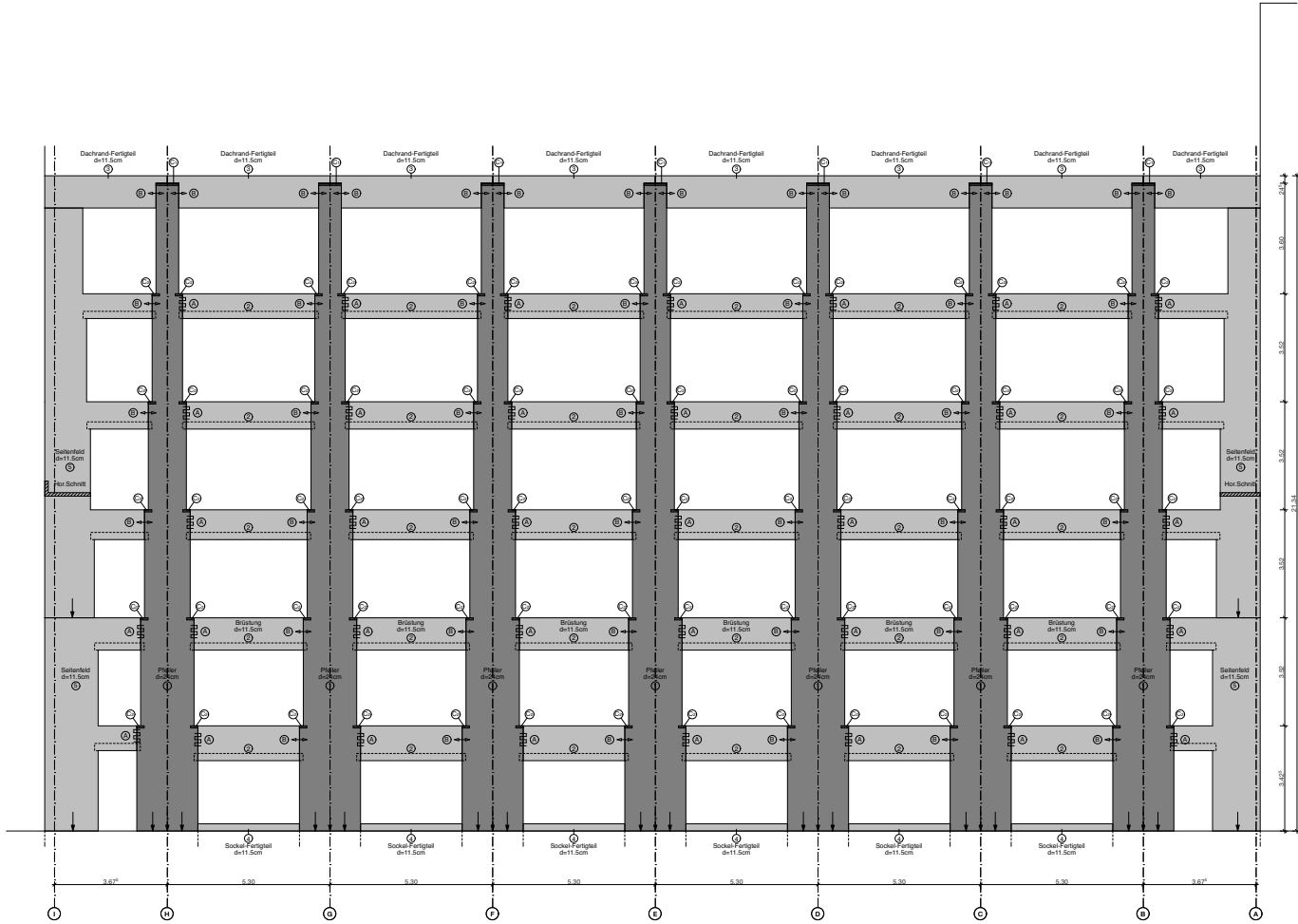




















Dr. Hamits

18

Sto



133

MITTELPUNKT